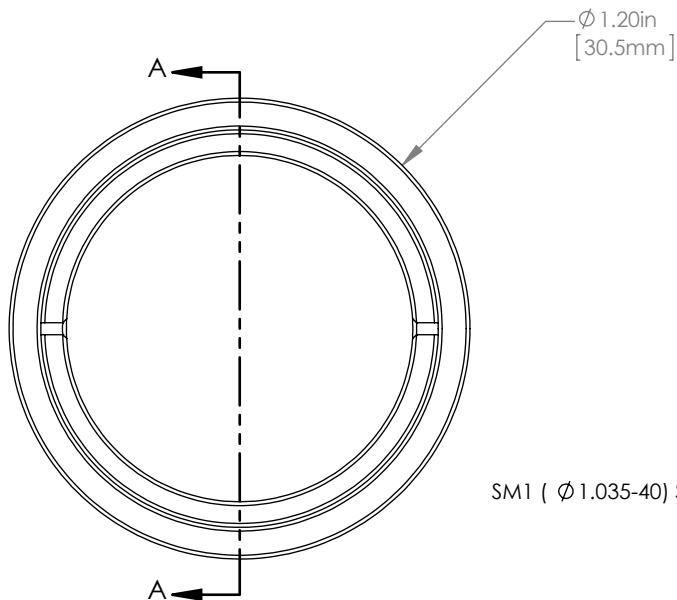
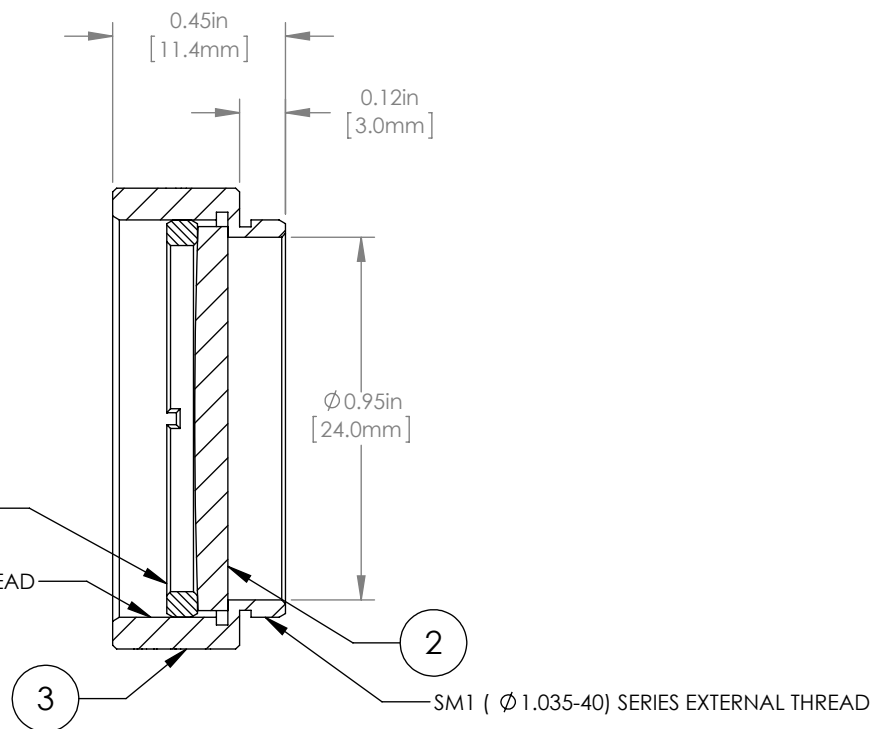


	PART DESCRIPTION	MATERIAL
①	SM1RR	ANODIZED ALUMINUM
②	LA1978-A	N-BK7
③	ENGRAVED HOUSING	ANODIZED ALUMINUM



$\varnothing 1.20\text{in}$   
[30.5mm]

SM1 (  $\varnothing 1.035\text{-}40$ ) SERIES INTERNAL THREAD



NOTES/SPECIFICATIONS:

1. DESIGN WAVELENGTH: 587.6nm
2. FOCAL LENGTH:  $f=747.5\text{mm} \pm 1\%$
3. WORKING DISTANCE (REF): 742.3mm
4. CLEAR APERTURE:  $> \varnothing 22.86\text{mm}$
5. SURFACE QUALITY: 40-20 SCRATCH-DIG
6. CENTRATION:  $< 3\text{arcmin}$
7. COATING: BBAR  $R_{\text{avg}} < 0.5\%$  FROM 350-700nm, AOI:  $0^\circ$ , ON OUTER OPTICAL SURFACES

FOR INFORMATION ONLY  
NOT FOR MANUFACTURING PURPOSES

DRAWING PROJECTION			 <a href="http://www.thorlabs.com">www.thorlabs.com</a> $\varnothing 1\text{'}$ MOUNTED PLANO CONVEX LENS, $f=750\text{mm}$ , -A COAT	
NAME	DATE			
DRAWN	GG	30/JUN/15	MATERIAL	
APPROVAL	DD	30/JUN/15		
COPYRIGHT © 2015 BY THORLABS			SEE TABLE	
VALUES IN PARENTHESIS ARE CALCULATED AND MAY CONTAIN ROUND OFF ERRORS			ITEM #	APPROX WEIGHT
			LA1978-A-ML	8 g
			REV	A