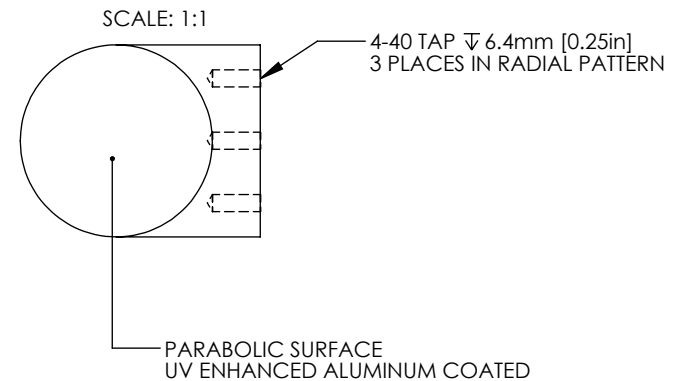
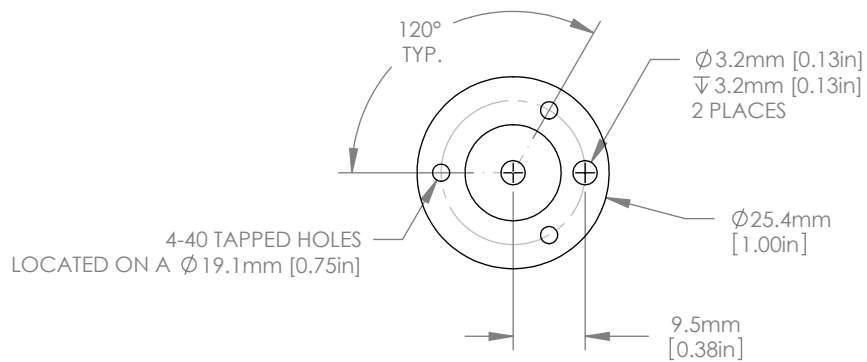


1:1 ISOMETRIC VIEW



NOTES/SPECIFICATIONS:

1. PFL(PARENT FOCAL LENGTH): 50.8mm ±1%
2. REFLECTED FOCAL LENGTH: 101.6mm ±1%
3. CLEAR APERTURE: >90% OF DIAMETER
4. SURFACE IRREGULARITY: 0.25λ @ 633nm
5. SURFACE QUALITY: 40-20 SCRATCH-DIG
6. SURFACE ROUGHNESS: <100A RMS
7. COATING (PARABOLIC SURFACE): UV ENHANCED ALUMINUM
Ravg>90% FROM 250-450nm
8. BLACK ANODIZED FINISH (NON-OPTICAL SURFACES)

FOR INFORMATION ONLY
NOT FOR MANUFACTURING PURPOSES

DRAWING PROJECTION				 www.thorlabs.com	
NAME	DATE	Ø 25.4mm 90° OFF AXIS PARABOLA PFL=50.8mm, UV ENHANCED ALUMINUM			
DRAWN	MG	25/JULY/12	MATERIAL		REV
APPROVAL	DD	30/JULY/12	6061-T6 ALUMINUM		A
COPYRIGHT © 2012 BY THORLABS					
VALUES IN PARENTHESIS ARE CALCULATED AND MAY CONTAIN ROUND OFF ERRORS			ITEM #	APPROX WEIGHT	
			MPD254508-90-F01	0.01 kg	