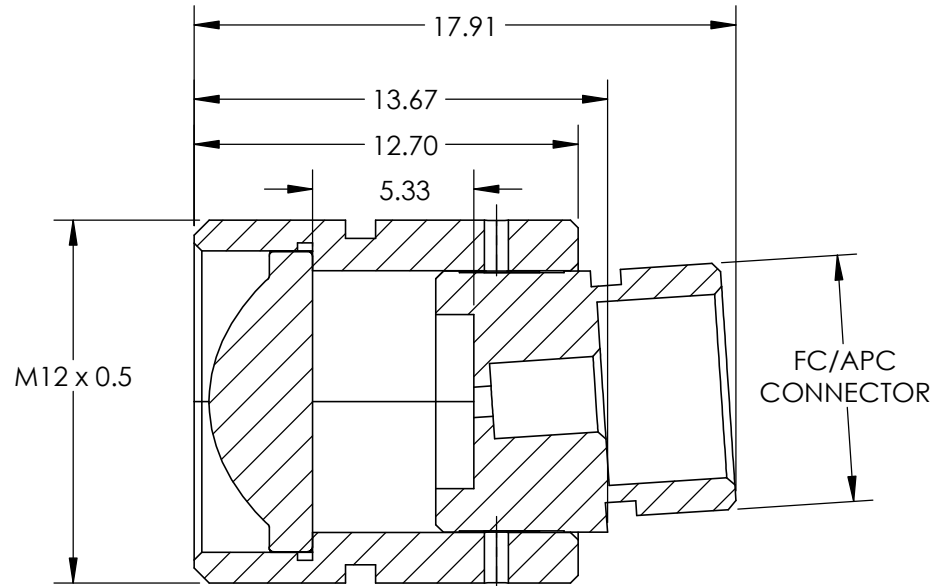
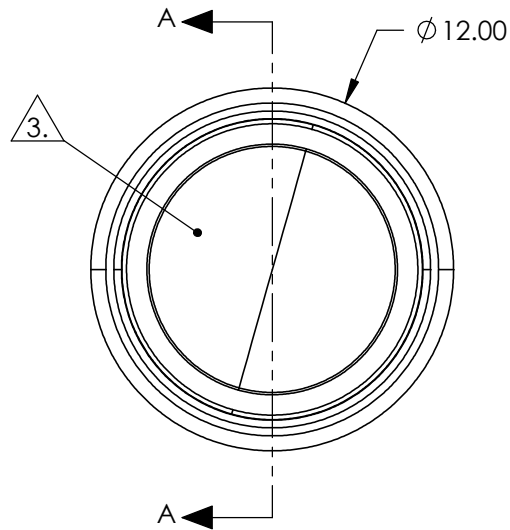
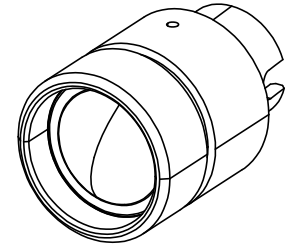


NOTES:

1. MATERIAL
HOUSING: STAINLESS STEEL
LENS: D-ZK3
2. COATING
S1 & S2: R(AVG) <0.5% @ 350 - 700nm
3. CLEAR APERTURE: 8.00mm
4. ALIGNMENT WAVELENGTH: 543nm
5. RoHS: COMPLIANT



SECTION A-A

SPECIFICATIONS SUBJECT TO CHANGE WITHOUT NOTICE
DIMENSIONS ARE FOR REFERENCE ONLY

**FOR INFORMATION ONLY:
DO NOT MANUFACTURE
PARTS TO THIS DRAWING**

EO[®] Edmund Optics[®]

THIRD ANGLE PROJECTION		TITLE	LightPath 354240 543nm Alignment, 0.50 NA Fiber Collimator w/ FC/APC Connector	
ALL DIMS IN	mm	DWG NO	16709	SHEET 1 OF 1