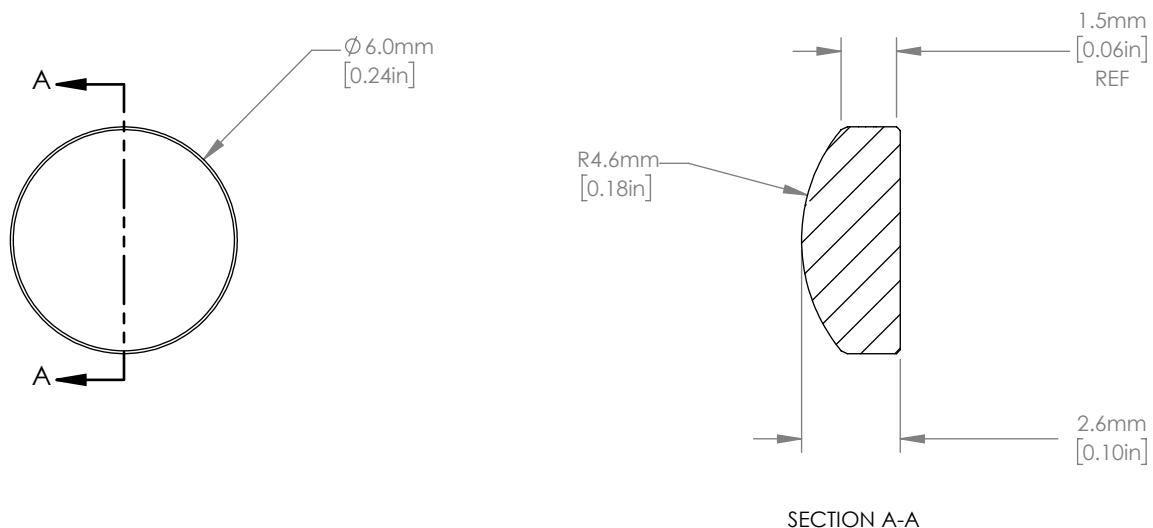




ISOMETRIC VIEW
SCALE: 5:1



NOTES/SPECIFICATIONS:

1. DESIGN WAVELENGTH: 587.6 nm
2. FOCAL LENGTH: $f=10.0\text{ mm} \pm 1\%$
3. BACK FOCAL LENGTH(REF): $bf=8.2\text{ mm}$
4. CLEAR APERTURE: $> \Phi 5.4\text{ mm}$
5. SURFACE QUALITY: 40-20 SCRATCH-DIG
6. CENTRATION: $<3\text{ arcmin}$
7. DIAMETER TOLERANCE: $+0.0/-0.1\text{ mm}$
8. THICKNESS TOLERANCE: $\pm 0.1\text{ mm}$
9. COATING: BBAR $R_{avg} < 0.5\%$ FROM 1050-1700 nm, AOI: 0°

FOR INFORMATION ONLY
NOT FOR MANUFACTURING PURPOSES

DRAWING PROJECTION			THORLABS www.thorlabs.com $\Phi 6.0\text{ mm } f=10.0\text{ mm}$ FUSED SILICA PLANO CONVEX LENS, -C COAT	
NAME	DATE			
DRAWN	YB	16/NOV/21	MATERIAL UV FUSED SILICA	
APPROVAL	DS	29/NOV/21		
COPYRIGHT © 2021 BY THORLABS VALUES IN PARENTHESIS ARE CALCULATED AND MAY CONTAIN ROUND OFF ERRORS			ITEM #	APPROX WEIGHT
			LA4280-C	0.13 g