

NOTES:

1. SUBSTRATE MATERIAL:
N-BK7

2. SURFACE S2 TO BE PARALLEL WITH SURFACE S1 TO WITHIN ≤ 3 ARCMIN

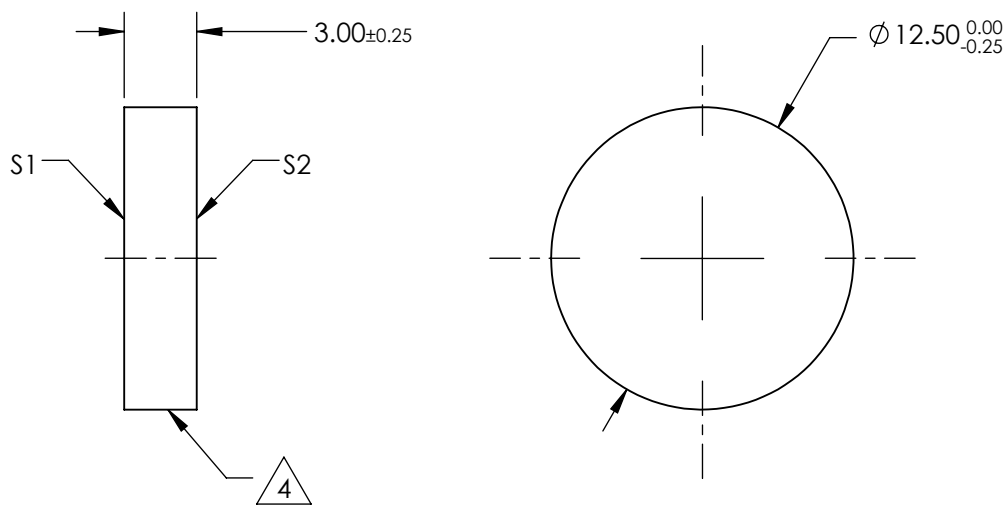
3. COATING (APPLY ACROSS CLEAR APERTURE)

S1: 80% R $\pm 5\%$ @ 550nm
20% T $\pm 5\%$ @ 550nm

S2: AR R(avg) $\leq 1\%$, R(abs) $\leq 2\%$ @ 400 - 700nm


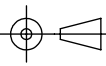
4.  CUT WITH 0.25mm MAXIMUM EDGE CHIP

5. ROHS COMPLIANT



**FOR INFORMATION ONLY:
DO NOT MANUFACTURE
PARTS TO THIS DRAWING**

SPECIFICATIONS SUBJECT TO CHANGE WITHOUT NOTICE
DIMENSIONS ARE FOR REFERENCE ONLY

	S1	S2				
SHAPE	PLANO	PLANO				
ANGLE OF INCIDENCE	45°	45°	THIRD ANGLE PROJECTION		TITLE	12.5 x 17.5mm, 80 R/20 T, PLATE BEAMSPLITTER
SURFACE QUALITY	60-40	60-40	ALL DIMS IN	mm	DWG NO	68417
SURFACE FLATNESS	1λ PER 25mm	1λ PER 25mm				SHEET 1 OF 1