

NOTES:

1. SUBSTRATE: FUSED SILICA
2. SURFACE S2 TO BE PARALLEL TO SURFACE S1 TO WITHIN <3 ARCMIN

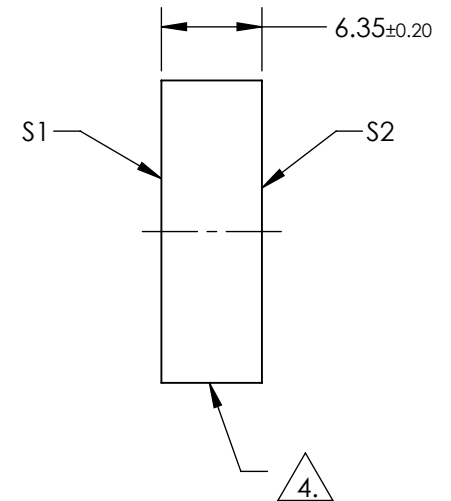
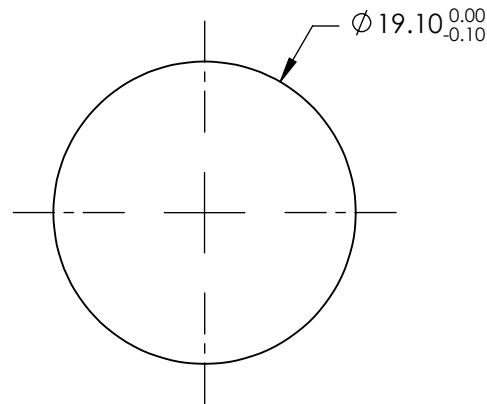
3. COATING (APPLY ACROSS COATING APERTURE)  
 S1: Laser V-Coat (1064nm)  
 R(ABS) <0.25% @ 1064nm @ 0 ±5° AOI

DAMAGE THRESHOLD,  
 PULSED: 15 J/cm² @ 1064nm, 20ns, 20Hz

S2: NONE

△ FINE GRIND SURFACE

5. ROHS: COMPLIANT



**FOR INFORMATION ONLY:  
 DO NOT MANUFACTURE  
 PARTS TO THIS DRAWING**

SPECIFICATIONS SUBJECT TO CHANGE WITHOUT NOTICE  
 DIMENSIONS ARE FOR REFERENCE ONLY

	S1	S2
SHAPE	PLANO	PLANO
SURFACE QUALITY	10-5	10-5
CLEAR APERTURE	90 %	90 %
BEVEL	PROTECTIVE AS NEEDED	PROTECTIVE AS NEEDED



ALL DIMS IN mm

**EO**® **Edmund Optics**®

TITLE: 19.1mm Dia. 1064nm, Nd:YAG Laser Line Beam Sampler

DWG NO: 39015

SHEET 1 OF 1