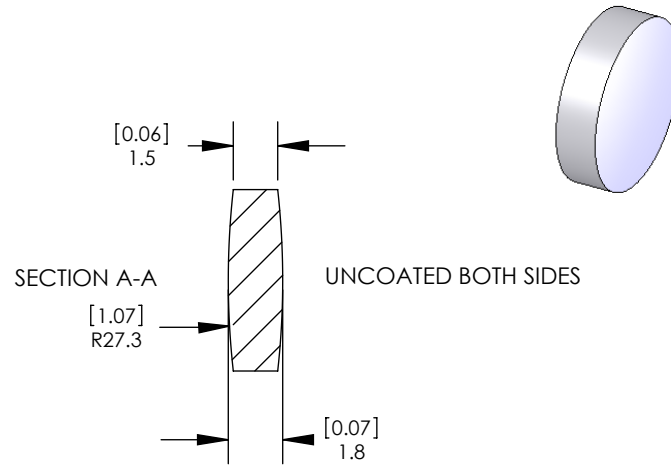
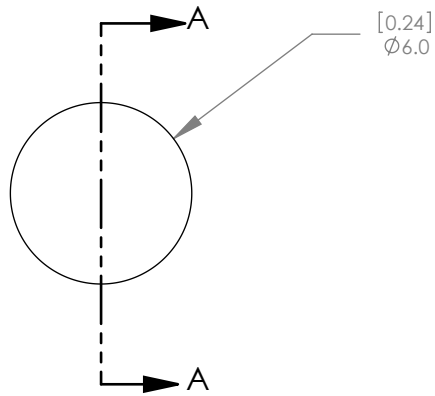


REV. #	DESCRIPTION:	NAME/DATE:



FOCAL LENGTH: 30.0mm \pm 1%
 BACK FOCAL LENGTH: 29.4mm
 INDEX: 1.460 @ 588nm
 DESIGN WAVELENGTH: 588nm
 SCRATCH/DIG: 40/20
 DIAMETER TOLERANCE: +0.00mm/-0.10mm
 CLEAR APERTURE: >90% OF DIAMETER
 CENTRATION: 3 arcmin

ALL DIMENSIONS IN
MILLIMETERS AND INCHES

FOR INFORMATION ONLY
NOT FOR MANUFACTURE

THORLABS INC. PO BOX 366
NEWTON NJ

TOLERANCES		NAME	DATE
UNLESS OTHERWISE SPECIFIED:		DRAWN	AP
DIMENSIONS ARE IN MILLIMETERS		ENG APPR.	TO
LINEAR TOLERANCES:		MFG APPR.	TO
ONE PLACE DECIMAL: \pm 0.2		PROPRIETARY AND CONFIDENTIAL THE INFORMATION CONTAINED IN THIS DRAWING IS THE SOLE PROPERTY OF THORLABS, INC. ANY REPRODUCTION IN PART OR AS A WHOLE WITHOUT THE WRITTEN PERMISSION OF THORLABS, INC. IS PROHIBITED.	
TWO PLACE DECIMAL: \pm 0.04			
ANGULAR: \pm 30'			

TITLE: Ø6mm UV FUSED SILICA BI CONVEX LENS			
MATERIAL: UV GRADE FUSED SILICA		SIZE A	REV. B
SCALE: 4:1		SHEET 1 OF 1	
DWG. NO. 3392-E01	PART NO. LB4209		