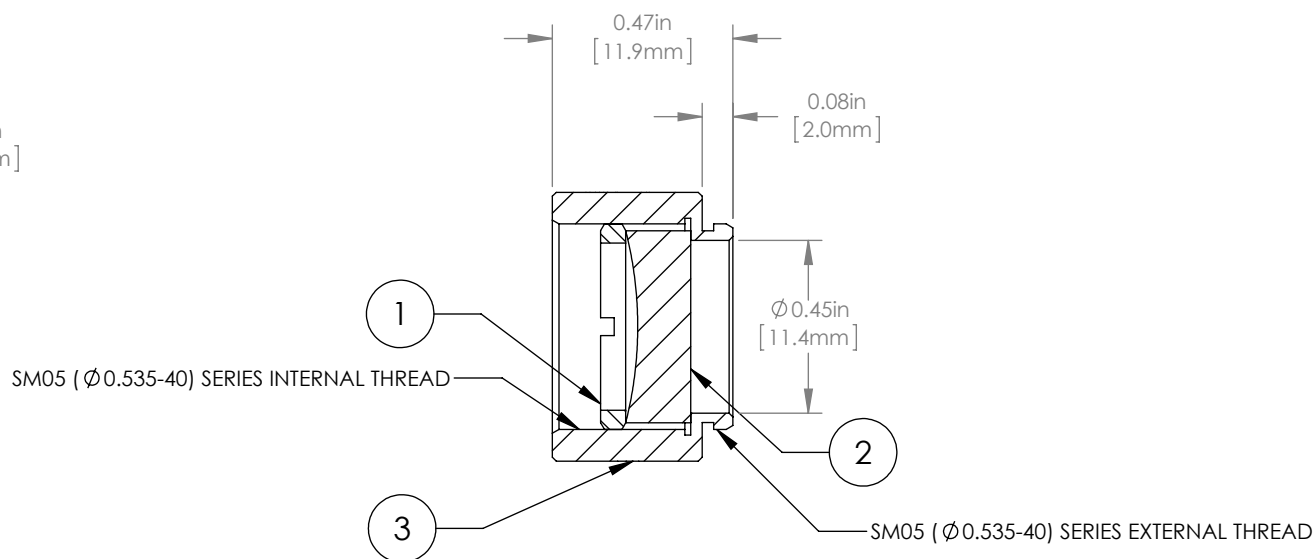
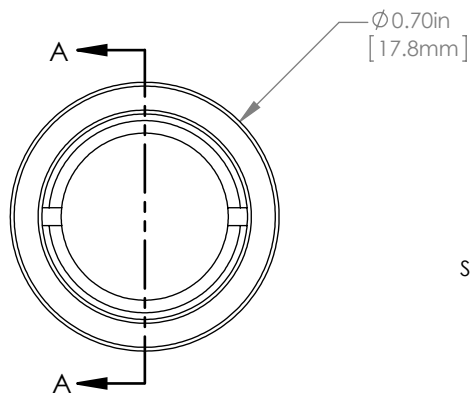
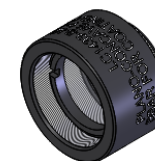


	PART DESCRIPTION	MATERIAL
①	SM05RR	ANODIZED ALUMINUM
②	LC1439-B	N-BK7
③	ENGRAVED HOUSING	ANODIZED ALUMINUM



NOTES/SPECIFICATIONS:

- DESIGN WAVELENGTH: 633nm
- FOCAL LENGTH: $f=-50.0\text{mm} \pm 1\%$
- WORKING DISTANCE (REF): -43.2mm
- CLEAR APERTURE: $> \phi 11.0\text{mm}$
- SURFACE QUALITY: 40-20 SCRATCH-DIG
- COATING: BBAR $R_{\text{avg}} < 0.5\%$ FROM 650-1050nm, AOI: 0° , ON OUTER OPTICAL SURFACES

FOR INFORMATION ONLY
NOT FOR MANUFACTURING PURPOSES

DRAWING PROJECTION						THORLABS www.thorlabs.com	
NAME	DATE	$\phi 1/2"$ MOUNTED PLANO-CONCAVE LENS, $f=-50\text{mm}$, -B COAT				MATERIAL	REV
DRAWN	GG	20/NOV/15	SEE TABLE				A
APPROVAL	DD	20/NOV/15	ITEM #				APPROX WEIGHT
COPYRIGHT © 2015 BY THORLABS		LC1439-B-ML				5 g	
<small>VALUES IN PARENTHESIS ARE CALCULATED AND MAY CONTAIN ROUND OFF ERRORS</small>							