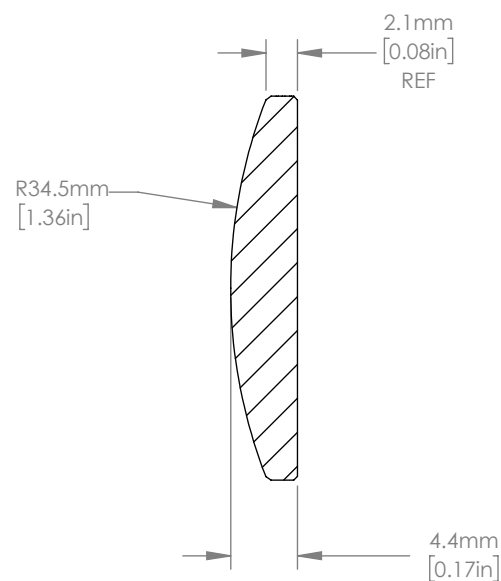
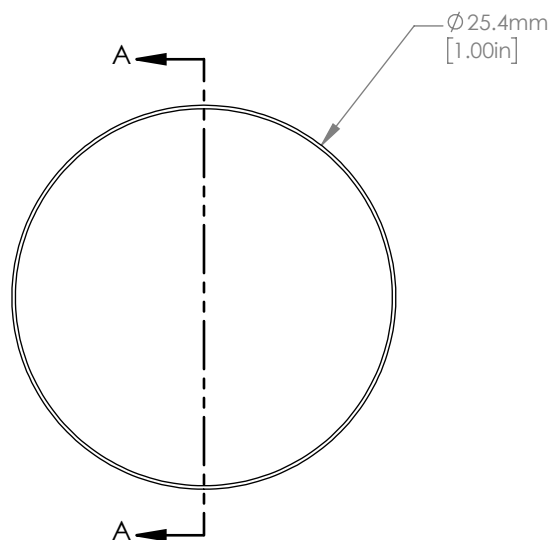


ISOMETRIC VIEW  
SCALE: 2:1



SECTION A-A

NOTES/SPECIFICATIONS:

1. DESIGN WAVELENGTH: 587.6 nm
2. FOCAL LENGTH:  $f=75.3\text{ mm} \pm 1\%$
3. BACK FOCAL LENGTH(REF):  $bf=72.2\text{ mm}$
4. CLEAR APERTURE:  $> \phi 22.86\text{ mm}$
5. SURFACE QUALITY: 20-10 SCRATCH-DIG
6. CENTRATION:  $< 3\text{ arcmin}$
7. DIAMETER TOLERANCE:  $+0.0/-0.1\text{ mm}$
8. THICKNESS TOLERANCE:  $\pm 0.1\text{ mm}$
9. COATING: VAR R $<0.25\%$  PER SURFACE FOR 405 nm, AOI:  $0^\circ$

FOR INFORMATION ONLY  
NOT FOR MANUFACTURING PURPOSES

|  |      |           |   |                         |
|--|------|-----------|---|-------------------------|
| DRAWING PROJECTION   |      |           | <b>THORLABS</b><br><a href="http://www.thorlabs.com">www.thorlabs.com</a>             |                         |
| NAME   | DATE |           |   |                         |
| DRAWN  | YB   | 04/JAN/21 | $\phi 25.4\text{ mm } f=75\text{ mm}$ FUSED SILICA<br>PLANO CONVEX LENS, -405 nm COAT |                         |
| APPROVAL   | MG   | 08/JAN/21 | MATERIAL  | REV                     |
| COPYRIGHT © 2021 BY THORLABS   |      |           | UV FUSED SILICA   | A                       |
| VALUES IN PARENTHESIS ARE CALCULATED<br>AND MAY CONTAIN ROUND OFF ERRORS |      |           | ITEM #<br>LA4725-405  | APPROX WEIGHT<br>3.59 g |