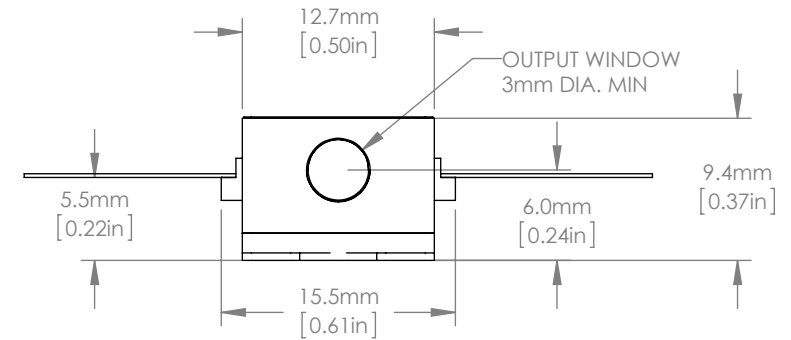
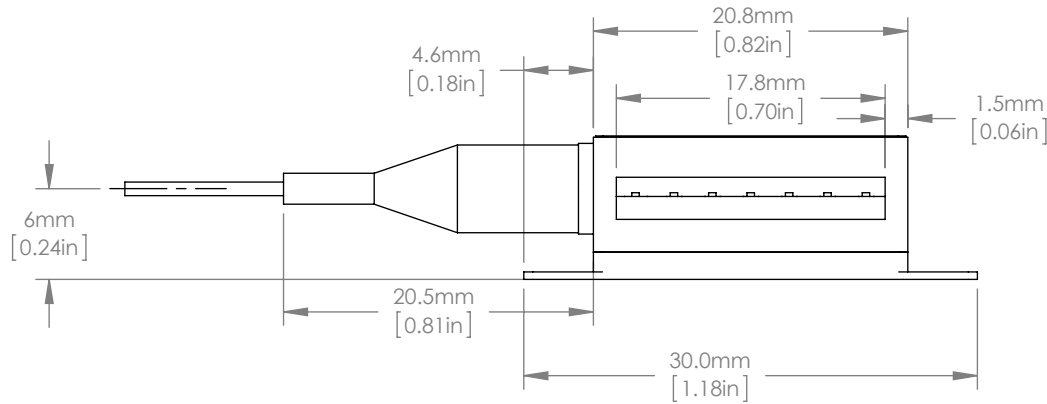


**PIN IDENTIFICATION**

- |                      |                 |
|----------------------|-----------------|
| 1. TEC +             | 14. TEC -       |
| 2. Thermistor (chip) | 13. Case        |
| 3. NC                | 12. NC          |
| 4. NC                | 11. Dev Cathode |
| 5. Thermistor (chip) | 10. Dev Anode   |
| 6. Thermistor (case) | 9. NC           |
| 7. Thermistor (case) | 8. NC           |



**NOTES :**

1. DEVICE IS PROVIDED WITH A 1000mm LENGTH FIBER TAIL TERMINATED IN AN FC/APC CONNECTOR; THE FIBER IS THORLABS PM780-HP FIBER PROTECTED BY 900UM DIAMETER LOOSE TUBE OVER THE FIRST 750mm, WITH REMAINING LENGTH TO CONNECTOR AS 250um PRIMARY COATED FIBER.

FOR INFORMATION ONLY  
NOT FOR MANUFACTURING PURPOSES

DRAWING PROJECTION				 www.thorlabs.com	
NAME	DATE				
DRAWN	AD	18/JAN/12	Tapered Amplifier (780nm)		REV
APPROVAL	PH	18/JAN/12	MATERIAL		A
COPYRIGHT © 2012 BY THORLABS					
VALUES IN PARENTHESIS ARE CALCULATED AND MAY CONTAIN ROUND OFF ERRORS		ITEM #	TPA780P20	APPROX WEIGHT	0.03 kg