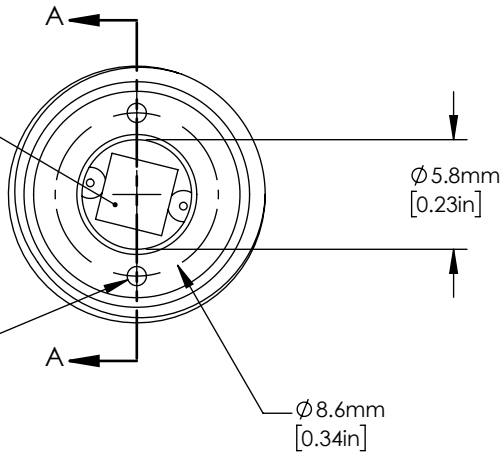
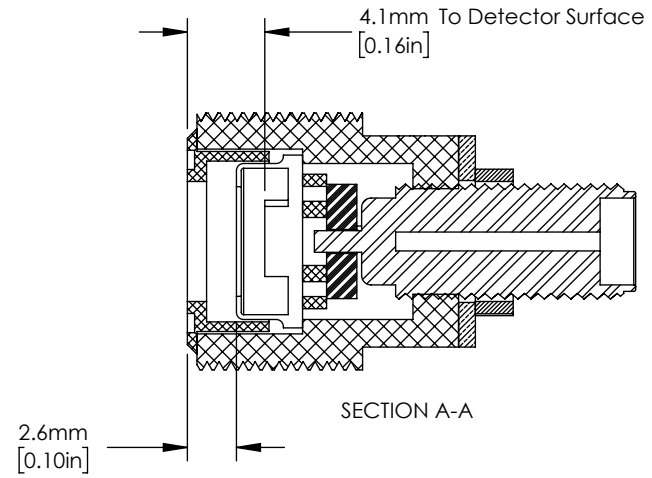


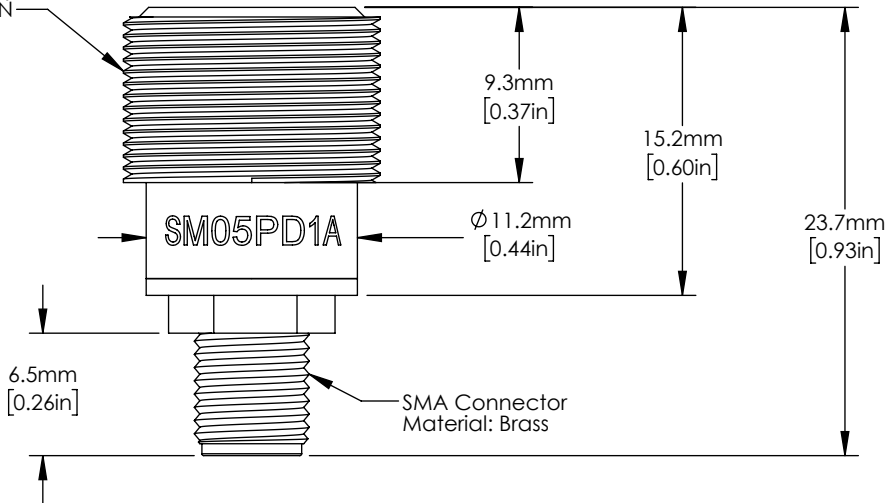
FDS100 Silicon Photodiode
 Active Area: 13 mm²
 Range: 350-1100 nm
 Cathode Grounded



Use with Adjustable
 Spanner Wrench



Housing
 External Thread:
 SM05 ($\varnothing 0.535-40$)
 Material: Black DELRIN



FOR INFORMATION ONLY
 NOT FOR MANUFACTURING PURPOSES

DRAWING PROJECTION

	NAME	DATE
DRAWN	WKC	29/MAR/18
APPROVAL	EC	30/MAR/18

COPYRIGHT © 2018 BY THORLABS

VALUES IN PARENTHESIS ARE CALCULATED
 AND MAY CONTAIN ROUND OFF ERRORS

THORLABS
 www.thorlabs.com

SM05 Mounted Si-Photodiode
 MATERIAL See Drawing
 REV D

ITEM # SM05PD1A
 APPROX WEIGHT .005 kg