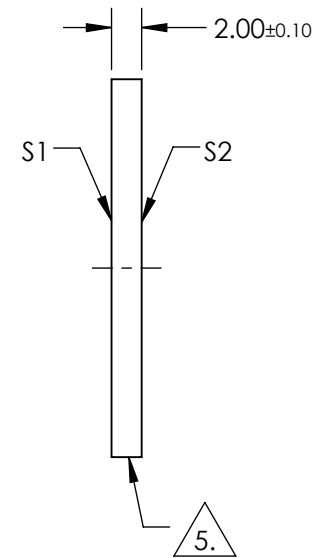
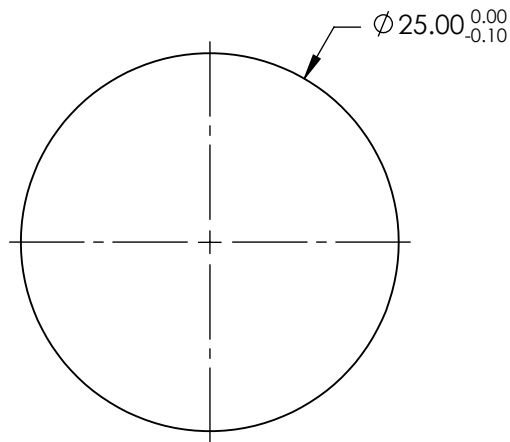


NOTES:

1. SUBSTRATE:
Suprasil® 300
2. SURFACE S2 TO BE PARALLEL TO SURFACE S1 TO WITHIN < 5 ARCSEC
3. COATING (APPLY ACROSS COATING APERTURE)
S1 & S2: BBAR (1650-3000nm)
R(AVG) <1% @ 1650 - 3000nm
R(ABS) <2% @ 1650 - 3000nm
4. TRANSMITTED WAVEFRONT DISTORTION P-V: ≤ 0.10 WAVE @ 632.8nm
5. FINE GRIND SURFACE
6. ROHS COMPLIANT



**FOR INFORMATION ONLY:
DO NOT MANUFACTURE
PARTS TO THIS DRAWING**

SPECIFICATIONS SUBJECT TO CHANGE WITHOUT NOTICE
DIMENSIONS ARE FOR REFERENCE ONLY

	S1	S2
SHAPE	PLANO	PLANO
SURFACE QUALITY	10-5	10-5
WAVELENGTH RANGE	1650 - 3000nm	1650 - 3000nm
BEVEL	PROTECTIVE AS NEEDED	PROTECTIVE AS NEEDED

THIRD ANGLE PROJECTION

ALL DIMS IN mm

Edmund Optics®

TITLE 25mm Dia., 2mm Thick, BBAR (1650-3000nm)
Coated, Suprasil Window

DWG NO 21246 SHEET 1 OF 1