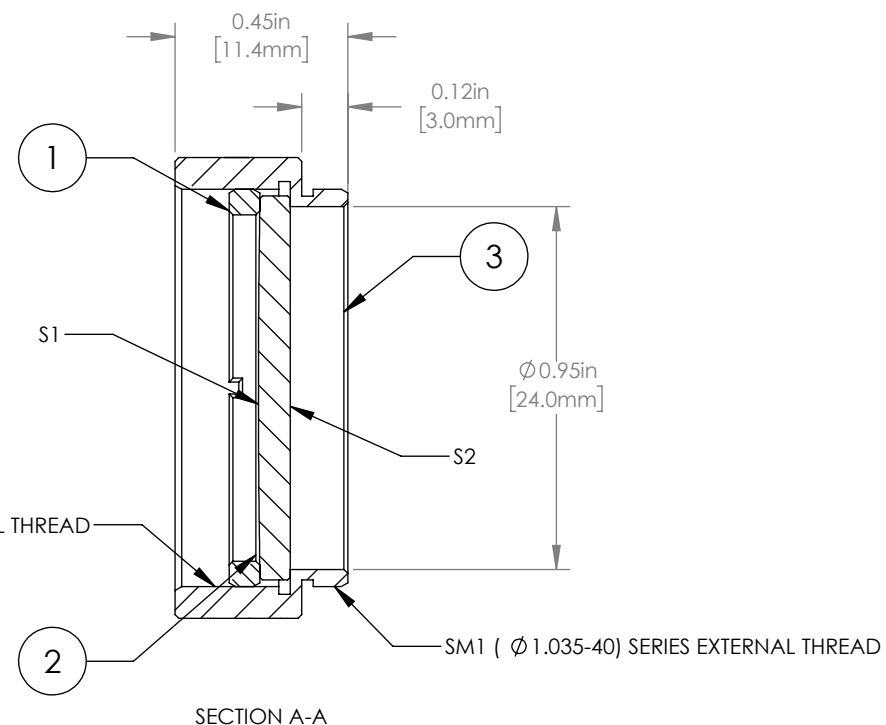
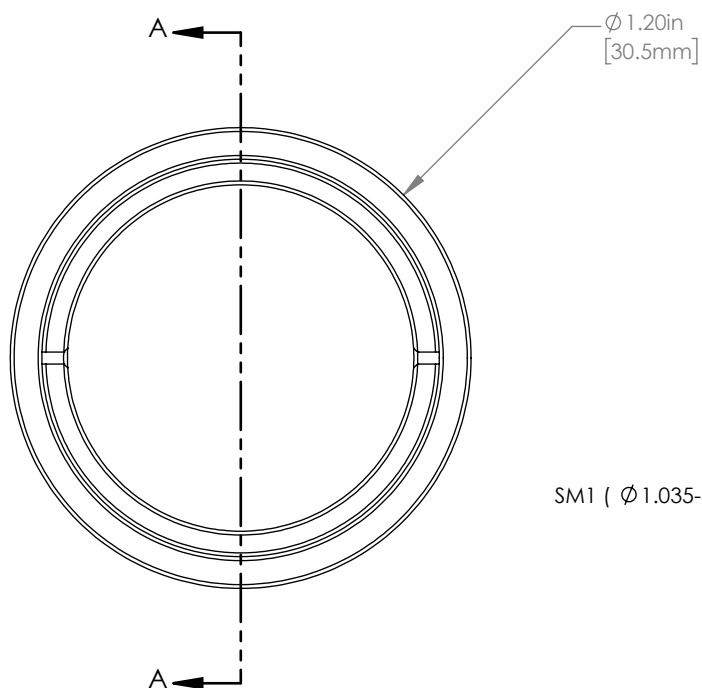


| | PART DESCRIPTION | MATERIAL |
|---|------------------|-------------------|
| ① | SM1RR | ANODIZED ALUMINUM |
| ② | LA1254-A | N-BK7 |
| ③ | ENGRAVED HOUSING | ANODIZED ALUMINUM |



NOTES/SPECIFICATIONS:

- DESIGN WAVELENGTH: 587.6 nm
- FOCAL LENGTH: $f=1500.0\text{ mm} \pm 1\%$
- WORKING DISTANCE (REF): 1494.8 mm
- CLEAR APERTURE: $\phi 22.9\text{ mm}$
- SURFACE QUALITY: 40-20 SCRATCH-DIG
- COATING (S1 & S2): BBAR 350-700 nm, $R_{\text{avg}} < 0.5\%$, 0° AOI

FOR INFORMATION ONLY
NOT FOR MANUFACTURING PURPOSES

| DRAWING PROJECTION | | | THORLABS www.thorlabs.com | |
|--|------|-----------|--|---------------|
| | NAME | DATE | MOUNTED $\phi 25.4\text{ mm}$ $f=1500.0\text{ mm}$ PLANO CONVEX LENS, -A COATED | |
| DRAWN | GG | 28/AUG/18 | MATERIAL | |
| APPROVAL | DD | 10/SEP/18 | SEE TABLE | |
| COPYRIGHT © 2019 BY THORLABS | | | ITEM # | APPROX WEIGHT |
| VALUES IN PARENTHESIS ARE CALCULATED AND MAY CONTAIN ROUND OFF ERRORS | | | LA1254-A-ML | 8 g |
| | | | REV | A |