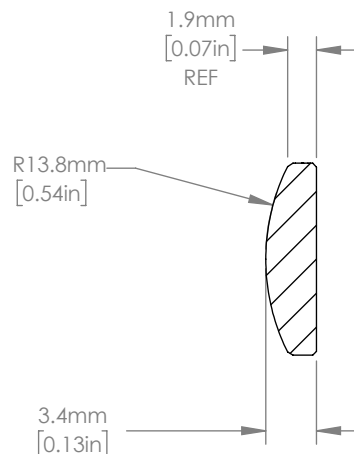
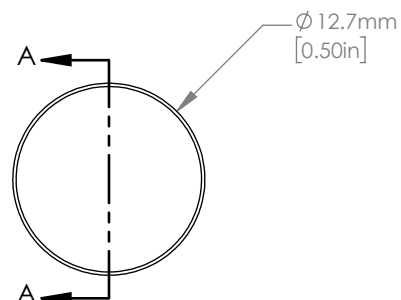




ISOMETRIC VIEW
SCALE: 2:1



SECTION A-A

NOTES/SPECIFICATIONS:

1. DESIGN WAVELENGTH: 587.6 nm
2. FOCAL LENGTH: $f=30.1 \text{ mm} \pm 1\%$
3. BACK FOCAL LENGTH(REF): $bf=27.8 \text{ mm}$
4. CLEAR APERTURE: $> \varnothing 11.43 \text{ mm}$
5. SURFACE QUALITY: 20-10 SCRATCH-DIG
6. CENTRATION: $< 3 \text{ arcmin}$
7. DIAMETER TOLERANCE: $+0.0/-0.1 \text{ mm}$
8. THICKNESS TOLERANCE: $\pm 0.1 \text{ mm}$
9. COATING: VAR R $<0.25\%$ PER SURFACE FOR 633 nm

FOR INFORMATION ONLY
NOT FOR MANUFACTURING PURPOSES

DRAWING PROJECTION			THORLABS www.thorlabs.com	
NAME	DATE			
DRAWN	YB	31/MAR/21	$\varnothing 12.7 \text{ mm } f=30 \text{ mm}$ FUSED SILICA PLANO CONVEX LENS, -633 nm COAT	
APPROVAL	CP	04/APR/21	MATERIAL	REV
COPYRIGHT © 2021 BY THORLABS <small>VALUES IN PARENTHESIS ARE CALCULATED AND MAY CONTAIN ROUND OFF ERRORS</small>			UV FUSED SILICA	B
ITEM #			APPROX WEIGHT	
LA4936-633			0.72 g	