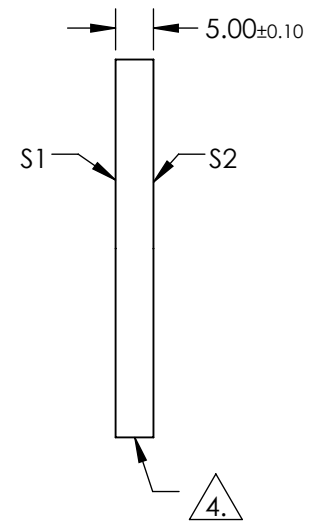
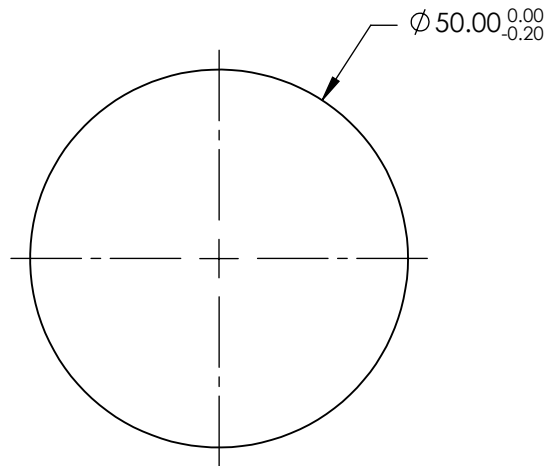


NOTES:

1. SUBSTRATE: UV GRADE FUSED SILICA
2. COATING (APPLY ACROSS COATING APERTURE)  
S1 & S2: RABS  $\leq 1.0\%$  @ 350 - 450nm  
RAVG  $\leq 1.5\%$  @ 250 - 700nm
3. SURFACE S2 TO BE PARALLEL TO SURFACE S1 WITHIN  $<5$  ARCSEC

4. FINE GRIND SURFACE

5. RoHS COMPLIANT



**FOR INFORMATION ONLY:  
DO NOT MANUFACTURE  
PARTS TO THIS DRAWING**

SPECIFICATIONS SUBJECT TO CHANGE WITHOUT NOTICE  
DIMENSIONS ARE FOR REFERENCE ONLY

	S1	S2
SHAPE	PLANO	PLANO
SURFACE QUALITY	20-10	20-10
CLEAR APERTURE	$\varnothing 40.00$	$\varnothing 40.00$
BEVEL	PROTECTIVE AS NEEDED	PROTECTIVE AS NEEDED

THIRD ANGLE PROJECTION

ALL DIMS IN mm

Edmund Optics®

TITLE

50mm DIA., 5mm THICK, UV-VIS COATED  $\lambda/10$   
FUSED SILICA WINDOW

DWG NO

48069

SHEET  
1 OF 1