

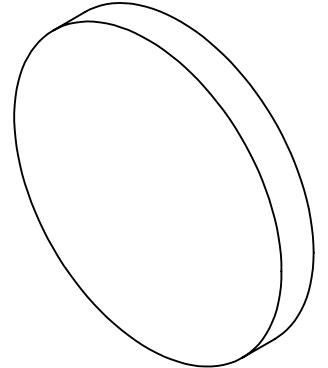
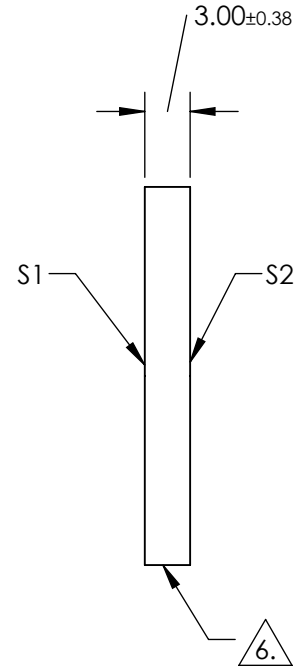
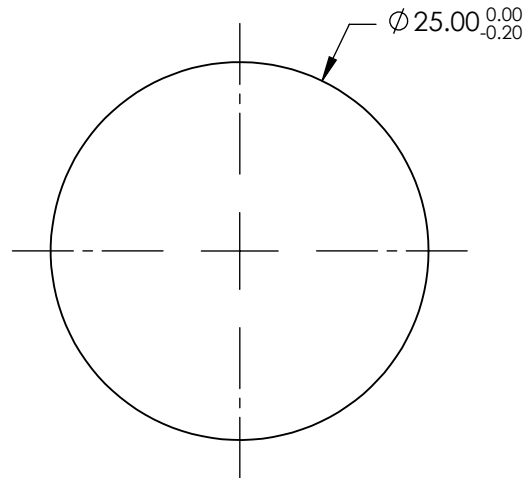
NOTES:

1. SUBSTRATE: Fused Silica (Corning 7980)
2. ROHS: COMPLIANT
3. SURFACE S2 TO BE PARALLEL TO SURFACE S1 WITHIN <5 ARCMIN
4. COATING(APPLY ACROSS CLEAR APERTURE)

S1 & S2: R(ABS) ≤0.25% @ 880nm
 R(AVG) ≤1.25% @ 400 - 870nm
 R(AVG) ≤1.25% @ 890 - 1000nm

5. TRANSMITTED WAVEFRONT DISTORTION: ≤ 1λ

 FINE GRIND SURFACE



**FOR INFORMATION ONLY:
 DO NOT MANUFACTURE
 PARTS TO THIS DRAWING**

SPECIFICATIONS SUBJECT TO CHANGE WITHOUT NOTICE
 DIMENSIONS ARE FOR REFERENCE ONLY

| | S1 | S2 |
|-----------------|---------------------|---------------------|
| SHAPE | PLANO | PLANO |
| SURFACE QUALITY | 60-40 | 60-40 |
| CLEAR APERTURE | Ø 22.50 | Ø 22.50 |
| BEVEL | PROTECTED AS NEEDED | PROTECTED AS NEEDED |



ALL DIMS IN mm

 **Edmund Optics®**

TITLE

25mm Dia., 3mm Thick VIS-NIR Coated, 1λ
 Fused Silica Window

DWG NO

19856

SHEET
 1 OF 1