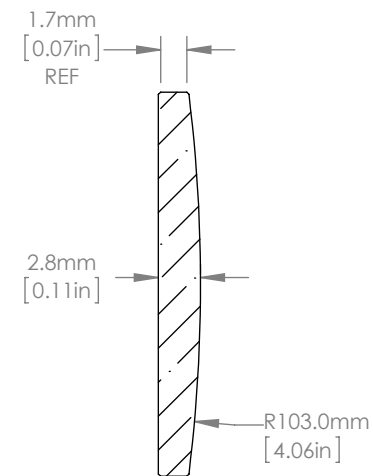
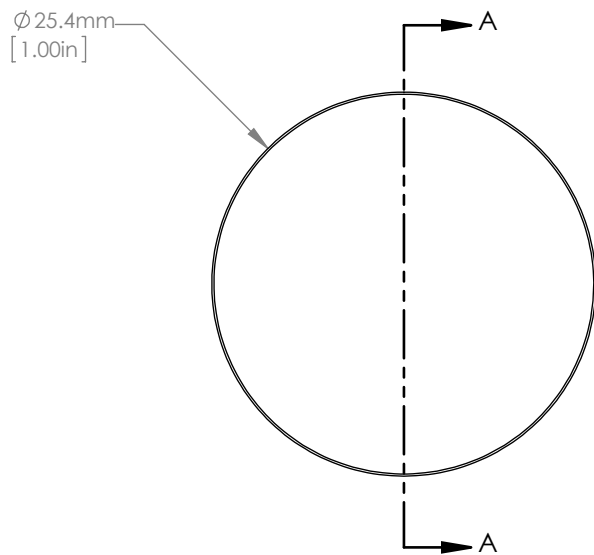


ISOMETRIC VIEW  
SCALE: 1:1



SECTION A-A  
SCALE 2:1

NOTES/SPECIFICATIONS:

1. DESIGN WAVELENGTH: 587.6nm
2. FOCAL LENGTH:  $f=199.32\text{mm} \pm 1\%$
3. BACK FOCAL LENGTH(REF):  $bf=197.49\text{mm}$
4. CLEAR APERTURE:  $>90\%$
5. SURFACE QUALITY: 20-10 SCRATCH-DIG
6. CENTRATION:  $<3\text{arcmin}$
7. DIAMETER TOLERANCE:  $+0.0/-0.1\text{mm}$
8. THICKNESS TOLERANCE:  $\pm 0.1\text{mm}$
9. COATING: VAR R $<0.25\%$  PER SURFACE FOR 532nm & 1064nm

FOR INFORMATION ONLY  
NOT FOR MANUFACTURING PURPOSES

DRAWING PROJECTION			 <a href="http://www.thorlabs.com">www.thorlabs.com</a> N-BK7 PLANO-CONVEX LENS $D=25.4\text{mm}$ , $f=200.0\text{mm}$ , ARC: 532/1064nm	
	NAME	DATE		
DRAWN	RJ	03/JAN/11	MATERIAL	
APPROVAL	DD	05/JAN/11		
COPYRIGHT © 2010 BY THORLABS			N-BK7	
VALUES IN PARENTHESIS ARE CALCULATED AND MAY CONTAIN ROUND OFF ERRORS			ITEM #	APPROX WEIGHT
			LA1708-YAG	0.03 kg
				REV B