

NOTES:

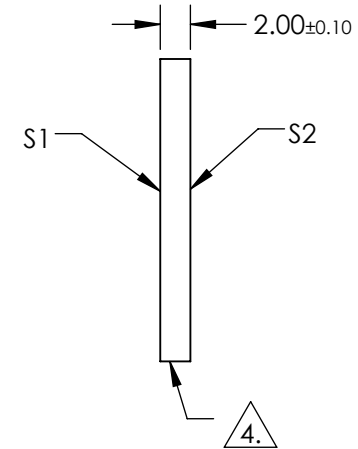
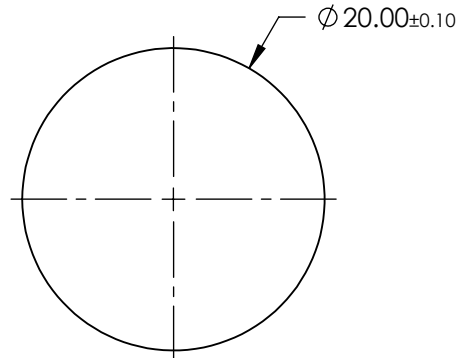
1. SUBSTRATE:  
SAPPHIRE (AL<sub>2</sub>O<sub>3</sub>)
2. SURFACE S2 TO BE PARALLEL WITH SURFACE S1 TO WITHIN ≤ 3.5 ARCMIN
3. COATING (APPLY ACROSS CLEAR APERTURE)

S1 & S2: R(AVG) <1% @ 1650 - 3000nm  
R(ABS) <2% @ 1650 - 3000nm

4. FINE GRIND SURFACE

5. ROHS COMPLIANT

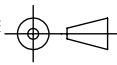
**FOR INFORMATION ONLY:  
DO NOT MANUFACTURE  
PARTS TO THIS DRAWING**



	S1	S2
SHAPE	PLANO	PLANO
CLEAR APERTURE	$\varnothing 18.00$	$\varnothing 18.00$
SURFACE FLATNESS	$2\lambda$	$2\lambda$
SURFACE ROUGHNESS	0.1 MICRONS PER INCH	0.1 MICRONS PER INCH
SURFACE QUALITY	80-50	80-50
BIREFRINGENCE ( $n_o - n_e$ )	0.008	0.008
BEVEL	PROTECTIVE AS NEEDED	PROTECTIVE AS NEEDED

SPECIFICATIONS SUBJECT TO CHANGE WITHOUT NOTICE  
DIMENSIONS ARE FOR REFERENCE ONLY

**EO**® Edmund Optics®

THIRD ANGLE PROJECTION 

ALL DIMS IN mm

TITLE	20mm DIAMETER, BBAR (1650-3000nm) AR COATED SAPPHIRE WINDOW	
DWG NO	15994	SHEET 1 OF 1