

NOTES:

1. SUBSTRATE MATERIAL:
FUSED SILICA

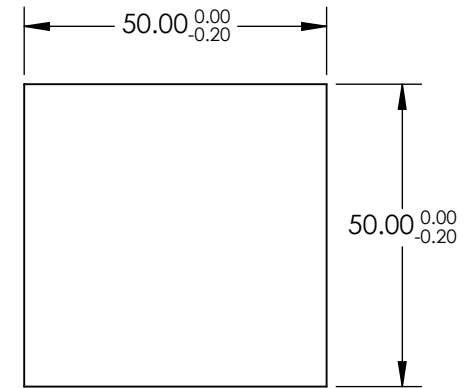
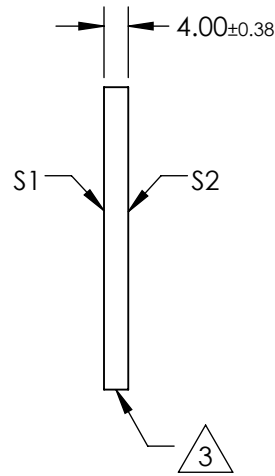
2. COATING (APPLY ACROSS CLEAR APERTURE)

S1: R(abs)= 50% ±5% @ 350nm, 45° AOI
R(avg)= 50% ±10% OVER 250 - 450nm, 45° AOI
T(abs)= 50% ±5% @ 350nm, 45° AOI
T(avg)= 50% ±10% OVER 250 - 450nm, 45° AOI

S2: BBAR (R(avg) <1%, R(abs) <2% OVER 250 - 450nm), 45° AOI

3. EDGES FINE GROUND

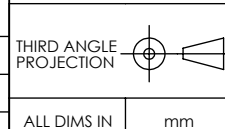
4. ROHS COMPLIANT



**FOR INFORMATION ONLY:
DO NOT MANUFACTURE
PARTS TO THIS DRAWING**

SPECIFICATIONS SUBJECT TO CHANGE WITHOUT NOTICE
DIMENSIONS ARE FOR REFERENCE ONLY

REV. A	S1	S2
SHAPE	PLANO	PLANO
CLEAR APERTURE	42.50 x 42.50	42.50 x 42.50
SURFACE QUALITY	60-40	60-40
SURFACE FLATNESS	1λ	1λ
BEVEL	PROTECTED AS NEEDED	PROTECTED AS NEEDED



EO® Edmund Optics®

TITLE	50 x 50mm, 50R/50T, UV PLATE BEAMSPLITTER		
DWG NO	48193	SHEET	1 OF 1