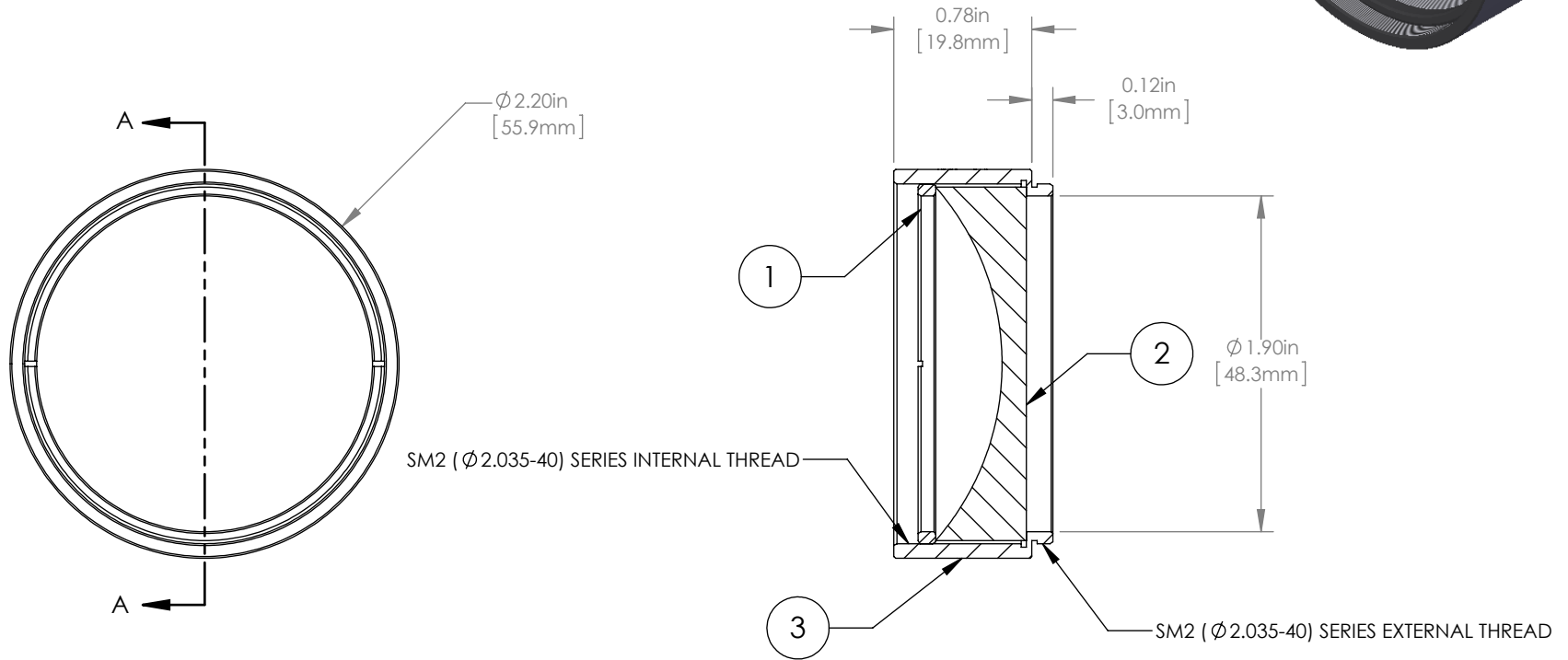
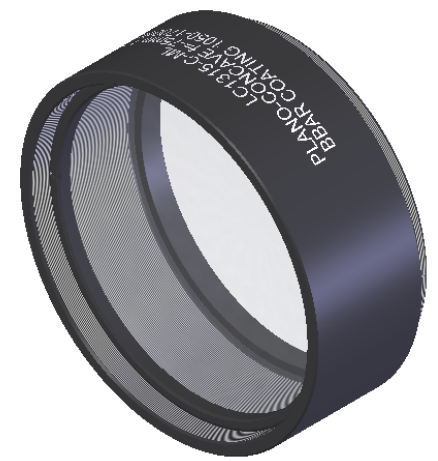


	PART DESCRIPTION	MATERIAL
①	SM2RR	ANODIZED ALUMINUM
②	LC1315-C	N-BK7
③	ENGRAVED HOUSING	ANODIZED ALUMINUM



NOTES/SPECIFICATIONS:

- DESIGN WAVELENGTH: 633nm
- FOCAL LENGTH: $f = -74.9\text{mm} \pm 1\%$
- WORKING DISTANCE (REF): -60.4mm
- CLEAR APERTURE: $> \text{Ø } 45.72\text{mm}$
- SURFACE QUALITY: 40-20 SCRATCH-DIG
- COATING: BBAR $R_{\text{avg}} < 0.5\%$ FROM 1050-1700nm, AOI: 0° , ON OUTER OPTICAL SURFACES

FOR INFORMATION ONLY
NOT FOR MANUFACTURING PURPOSES

DRAWING PROJECTION						THORLABS www.thorlabs.com	
NAME	DATE	$\text{Ø } 2''$ MOUNTED PLANO-CONCAVE LENS, $f = -75\text{mm}$, -C COAT				MATERIAL	REV
DRAWN	GG	20/NOV/15	SEE TABLE				A
APPROVAL	DD	20/NOV/15	ITEM #				APPROX WEIGHT
COPYRIGHT © 2015 BY THORLABS		LC1315-C-ML				58 g	
<small>VALUES IN PARENTHESIS ARE CALCULATED AND MAY CONTAIN ROUND OFF ERRORS</small>							