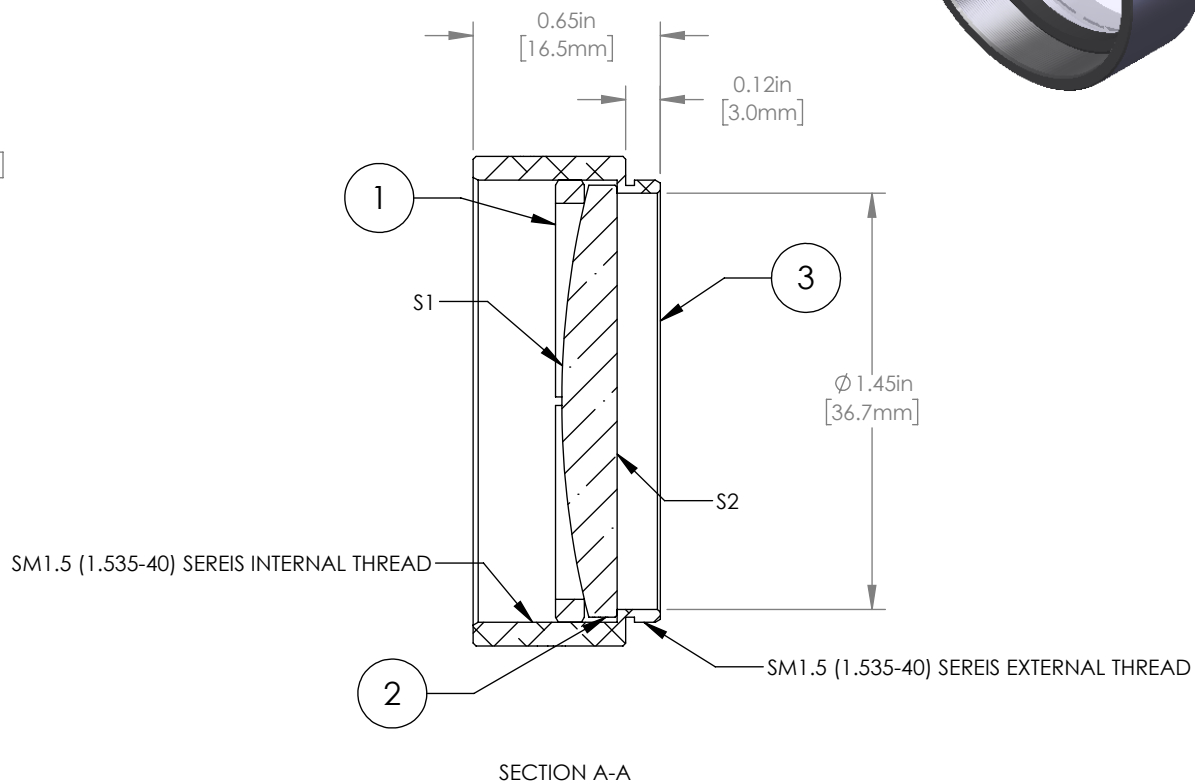
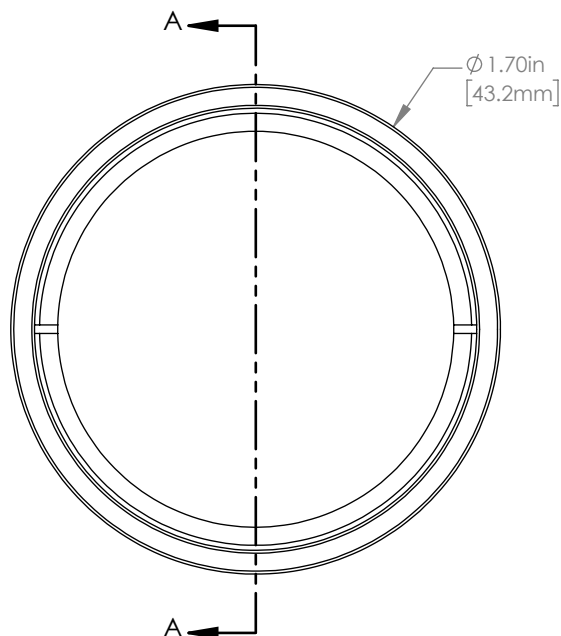


	PART DESCRIPTION	MATERIAL
①	SM1.5RR	ANODIZED ALUMINUM
②	LA1388	N-BK7
③	ENGRAVED HOUSING	ANODIZED ALUMIINUM



NOTES/SPECIFICATIONS:

- DESIGN WAVELENGTH: 587.6 nm
- FOCAL LENGTH: $f=150.0 \text{ mm} \pm 1\%$
- WORKING DISTANCE (REF): 143.8 mm
- CLEAR APERTURE: $>\text{Ø}34.29 \text{ mm}$
- SURFACE QUALITY: 40-20 SCRATCH-DIG

FOR INFORMATION ONLY
NOT FOR MANUFACTURING PURPOSES

DRAWING PROJECTION		THORLABS www.thorlabs.com	
	NAME	DATE	MOUNTED Ø38.1 mm f=150.0 mm N-BK7 PLANO CONVEX LENS
DRAWN	CP	19/NOV/19	MATERIAL
APPROVAL	DD	19/NOV/19	SEE TABLE
COPYRIGHT © 2020 BY THORLABS			REV A
VALUES IN PARENTHESIS ARE CALCULATED AND MAY CONTAIN ROUND OFF ERRORS			ITEM # LA1388-ML
			APPROX WEIGHT 22 g