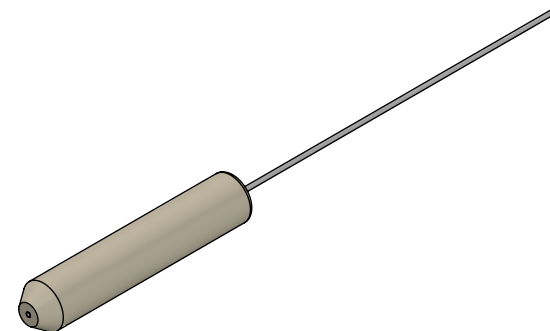


FIBER SPECIFICATIONS*

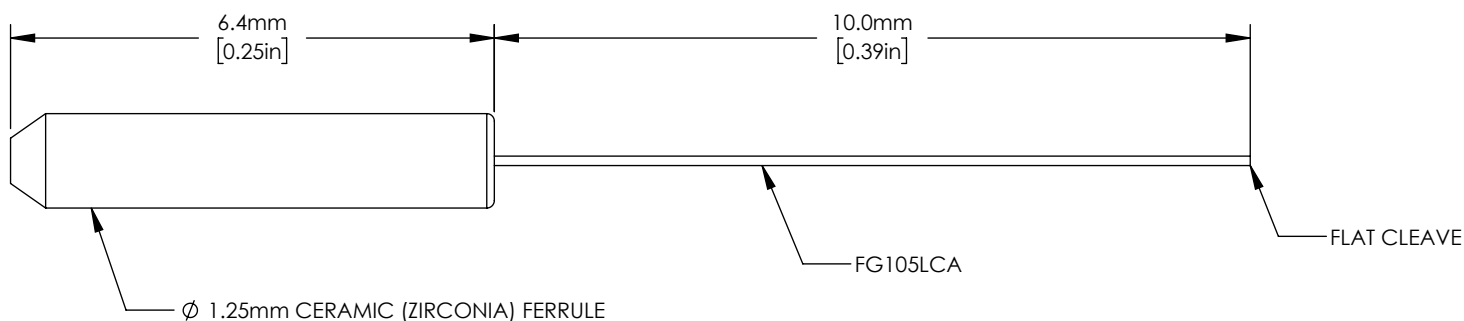
FIBER TYPE	CORE DIAMETER	CLADDING DIAMETER**	COATING DIAMETER	NA	OPERATING WAVELENGTH
FG105LCA	105 +1/-3 μm	125 +1/-2 μm	250 ±10 μm	0.22 ± 0.02	400 - 2400 nm

*SPECIFICATIONS BASED ON BARE-FIBER DATA

** OUTER DIAMETER OF FIBER PROTRUDING FROM FERRULE



ISOMETRIC VIEW
SCALE 6:1



*INCLUDED BUT NOT SHOWN:
1 PROTECTIVE DUST CAP

FOR INFORMATION ONLY
NOT FOR MANUFACTURING PURPOSES

DRAWING PROJECTION				THORLABS www.thorlabs.com	
NAME	DATE	1.25mm CERAMIC FIBER OPTIC CANNULA 105 μm, 0.22NA, 10mm LONG		MATERIAL	
DRAWN	JL	07/MAY/15	N/A		REV
APPROVAL	HC	19/APR/22	ITEM #		APPROX WEIGHT
COPYRIGHT © 2017 BY THORLABS			CFMLC21L10		0.04 g
VALUES IN PARENTHESIS ARE CALCULATED AND MAY CONTAIN ROUND OFF ERRORS					