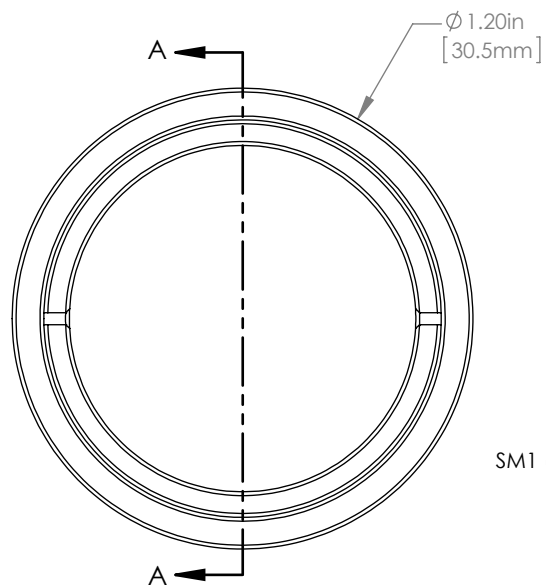
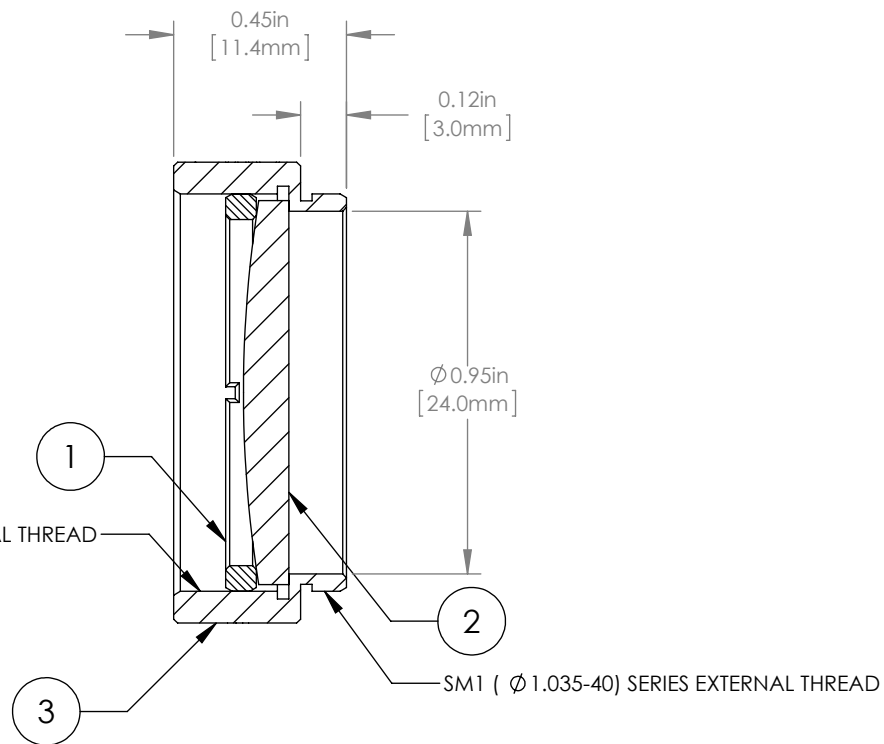


	PART DESCRIPTION	MATERIAL
①	SM1RR	ANODIZED ALUMINUM
②	LA4924-YAG	UV FUSED SILICA
③	ENGRAVED HOUSING	ANODIZED ALUMINUM



SM1 (  $\varnothing 1.035-40$  ) SERIES INTERNAL THREAD



NOTES/SPECIFICATIONS:

- DESIGN WAVELENGTH: 546nm
- FOCAL LENGTH:  $f=175.0\text{mm} \pm 1\%$
- WORKING DISTANCE (REF): 169.1mm
- CLEAR APERTURE:  $> \varnothing 22.86\text{mm}$
- SURFACE QUALITY: 40-20 SCRATCH-DIG
- COATING: BBAR  $R_{\text{avg}} < 0.25\%$  DUAL VAR 532 & 1064nm, AOI: 0°, ON OUTER OPTICAL SURFACES

FOR INFORMATION ONLY  
NOT FOR MANUFACTURING PURPOSES

DRAWING PROJECTION		THORLABS www.thorlabs.com	
	NAME	DATE	$\varnothing 1"$ MOUNTED PLANO-CONVEX LENS, $f=175\text{mm}$ , -YAG COAT MATERIAL SEE TABLE REV A
DRAWN	GG	13/OCT/15	
APPROVAL	DD	13/OCT/15	
COPYRIGHT © 2015 BY THORLABS VALUES IN PARENTHESIS ARE CALCULATED AND MAY CONTAIN ROUND OFF ERRORS			
ITEM #		APPROX WEIGHT	
LA4924-YAG-ML		8 g	