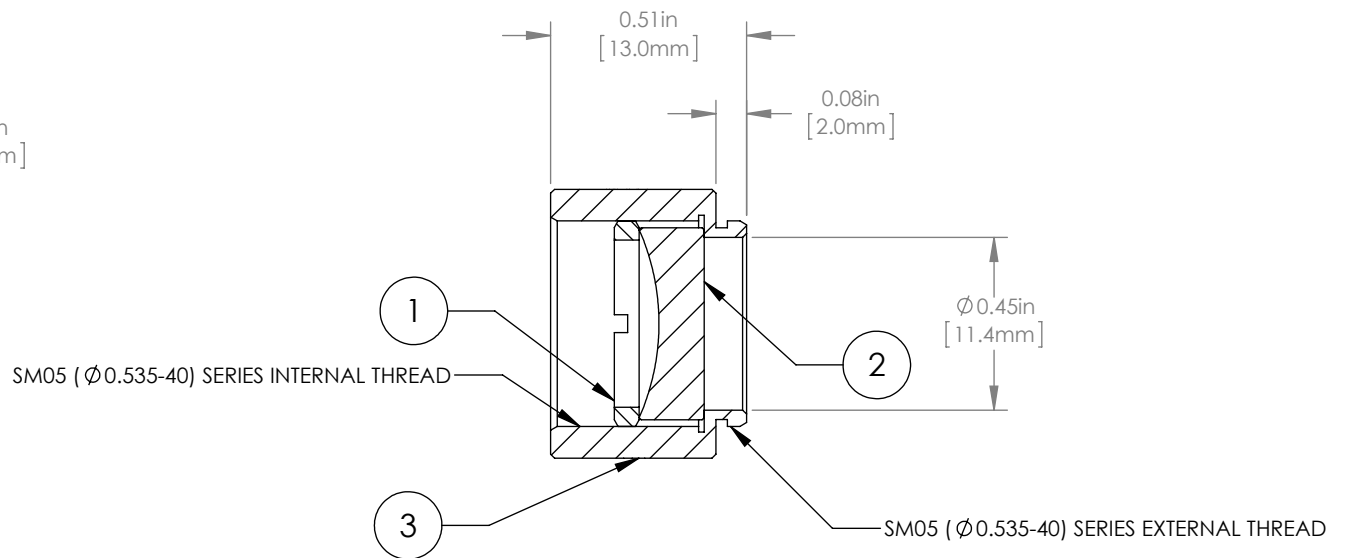
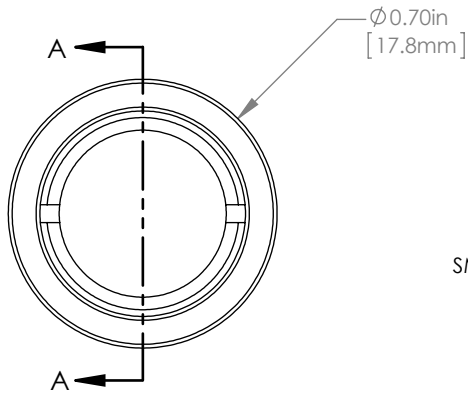
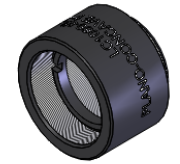


	PART DESCRIPTION	MATERIAL
①	SM05RR	ANODIZED ALUMINUM
②	LC1060	N-BK7
③	ENGRAVED HOUSING	ANODIZED ALUMINUM



NOTES/SPECIFICATIONS:

- DESIGN WAVELENGTH: 633nm
- FOCAL LENGTH:  $f = -30.0\text{mm} \pm 1\%$
- WORKING DISTANCE (REF):  $-21.7\text{mm}$
- CLEAR APERTURE:  $> \text{Ø} 11.0\text{mm}$
- SURFACE QUALITY: 40-20 SCRATCH-DIG

FOR INFORMATION ONLY  
NOT FOR MANUFACTURING PURPOSES

DRAWING PROJECTION			<b>THORLABS</b> www.thorlabs.com	
NAME	DATE	Ø 1/2" MOUNTED PLANO-CONCAVE LENS, $f = -30\text{mm}$		
DRAWN GG	20/NOV/15			
APPROVAL DD	20/NOV/15	MATERIAL	SEE TABLE	REV A
COPYRIGHT © 2015 BY THORLABS		ITEM #	LC1060-ML	APPROX WEIGHT
VALUES IN PARENTHESIS ARE CALCULATED AND MAY CONTAIN ROUND OFF ERRORS				5 g