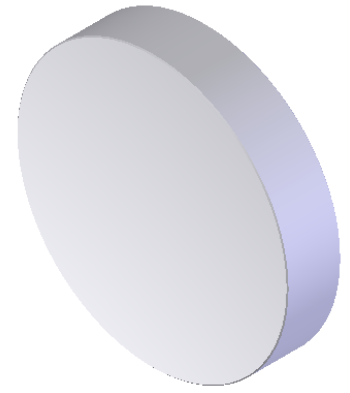
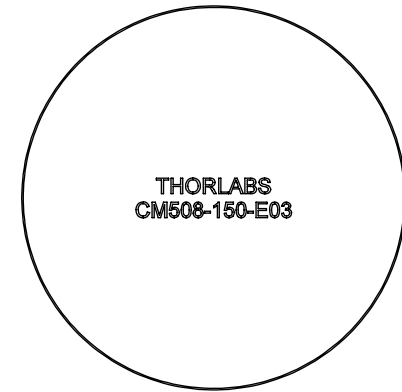


SECTION A-A



NOTES/SPECIFICATIONS:

1. CLEAR APERTURE: >90% DIAMETER
2. SURFACE ACCURACY: $\lambda/4$ AT 632.8nm OVER CLEAR APERTURE
3. SURFACE QUALITY: 20-10 SCRATCH-DIG
4. BACK SURFACE: FINE GROUND
5. THICKNESS TOLERANCE: ± 0.2 mm
6. DIAMETER TOLERANCE: + 0.0/-0.2 mm
7. COATING: BROADBAND HR, DIELECTRIC
 R_s and R_p >99% OVER WAVELENGTH RANGE
 AOI: 0° TO 45°

FOR INFORMATION ONLY
 NOT FOR MANUFACTURING PURPOSES

| | | | | |
|---|------|-----------|--|---------------|
| DRAWING PROJECTION | | | www.thorlabs.com | |
| NAME | DATE | | | |
| DRAWN | MG | 15/JUN/11 | \varnothing 50.8mm, f= 150.0mm BROADBAND MIRROR 750-1100nm | |
| APPROVAL | PM | 13/JUL/11 | MATERIAL | REV |
| COPYRIGHT © 2010 BY THORLABS | | | N-BK7 | A |
| VALUES IN PARENTHESIS ARE CALCULATED AND MAY CONTAIN ROUND OFF ERRORS | | | ITEM # | APPROX WEIGHT |
| | | | CM508-150-E03 | 0.05 kg |