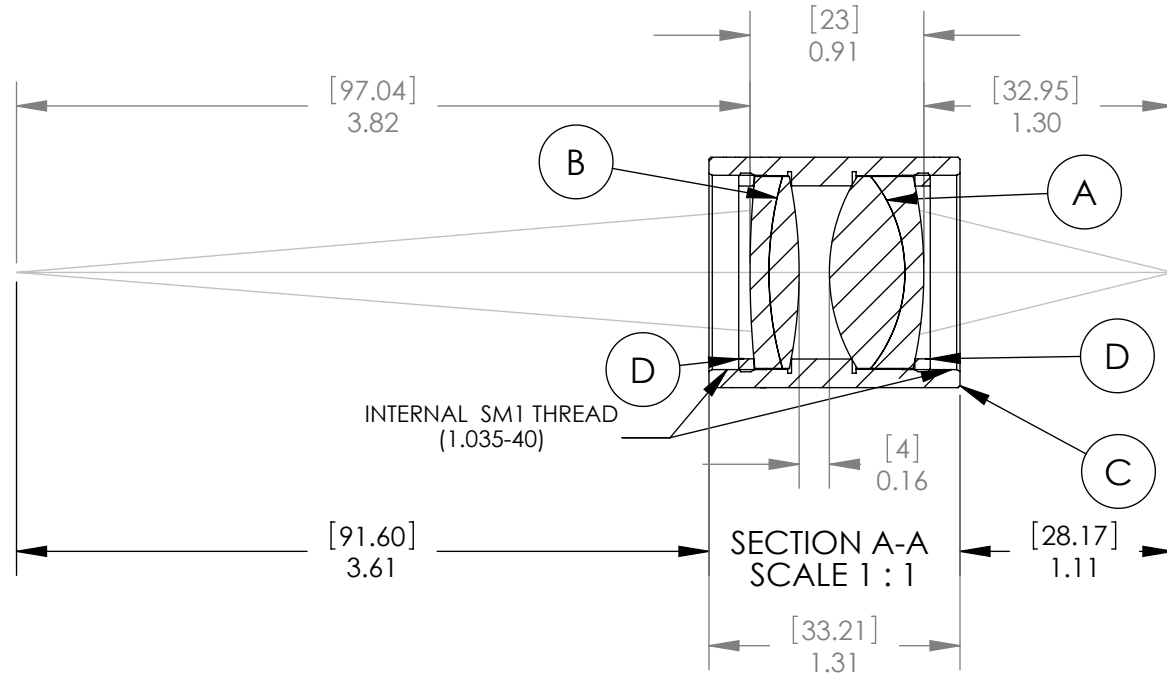
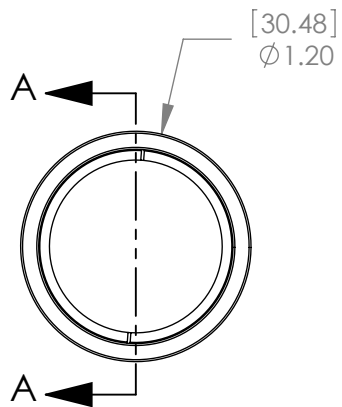


PART	PART NO.	MATERIAL
A	AC254-040-A1	BK7-SF5
B	AC254-100-A1	BK7-SF5
C	LENS MOUNT	6061-T6 ALUMINUM
D	SM1RR	6061-T6 ALUMINUM



SPECIFICATIONS:

DESIGN WAVELENGTH: 486.1, 587.6 & 656.3nm
 COATING: BBAR 400-700nm
 COATING RANGE: R(AVG)<0.5% FROM 400-700nm
 MAGNIFICATION: 1:1.25

Dimensions are in $\frac{[mm]}{in}$

NOTE:
FOR INFORMATION ONLY. NOT INTENDED FOR MANUFACTURING.

THORLABS INC. PO BOX 366
NEWTON NJ

TITLE: MATCHED ACHROMATIC PAIR
F1=40mm, F2=100mm

MATERIAL: SEE TABLE SIZE A REV. C

SCALE: 1:1 SHEET 1 OF 1

DWG. NO. 13325-E01 PART NO. MAP1040100-1-CT-ENGRAVE

	NAME	DATE
DRAWN	AP	04/14/06
ENG APPR.	TO	04/14/06
MFG APPR.	TO	04/14/06

PROPRIETARY AND CONFIDENTIAL

THE INFORMATION CONTAINED IN THIS DRAWING IS THE SOLE PROPERTY OF THORLABS, INC. ANY REPRODUCTION IN PART OR AS A WHOLE WITHOUT THE WRITTEN PERMISSION OF THORLABS, INC. IS PROHIBITED.