

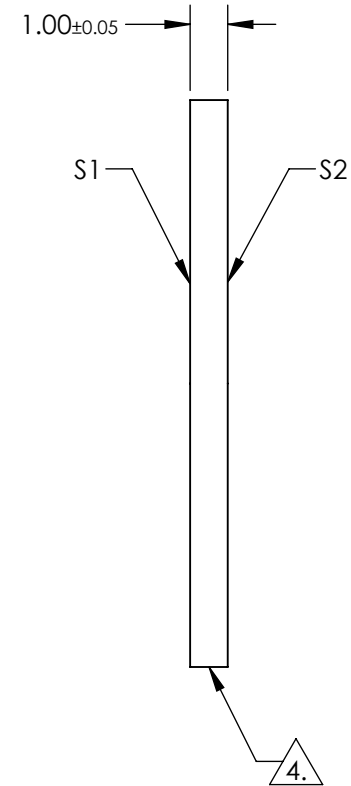
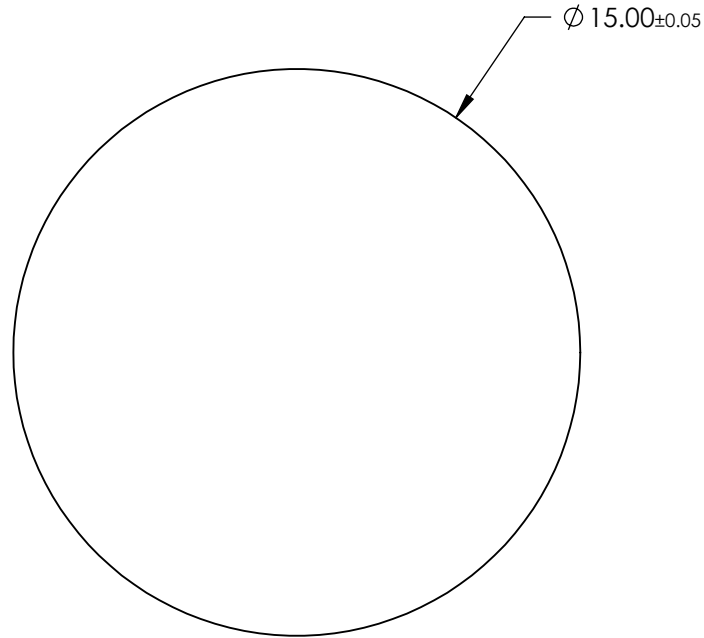
NOTES:

1. SUBSTRATE:  
Sapphire (Al<sub>2</sub>O<sub>3</sub>)
  2. SURFACE S2 TO BE PARALLEL WITH SURFACE S1 TO WITHIN ≤3.5 ARCMIN
  3. COATING (APPLY ACROSS CLEAR APERTURE)
- S1 & S2: NONE

4. FINE GRIND SURFACE

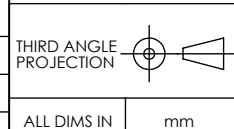
5. ROHS COMPLIANT

**FOR INFORMATION ONLY:  
DO NOT MANUFACTURE  
PARTS TO THIS DRAWING**



SPECIFICATIONS SUBJECT TO CHANGE WITHOUT NOTICE  
DIMENSIONS ARE FOR REFERENCE ONLY

REV. A	S1	S2
SHAPE	PLANO	PLANO
CLEAR APERTURE	$\phi 13.5$	$\phi 13.5$
SURFACE FLATNESS	$2\lambda$ (typical)	$2\lambda$ (typical)
SURFACE ROUGHNESS	$\leq 0.1 \mu\text{m PER INCH}$	$\leq 0.1 \mu\text{m PER INCH}$
SURFACE QUALITY	80-50	80-50
BIREFRINGENCE (no-ne)	0.008	0.008
BEVEL	PROTECTED AS NEEDED	PROTECTED AS NEEDED



**EO**® **Edmund Optics**®

TITLE	15mm Dia., 1mm Thick, Uncoated, Sapphire Window		
DWG NO	17226	SHEET	1 OF 1