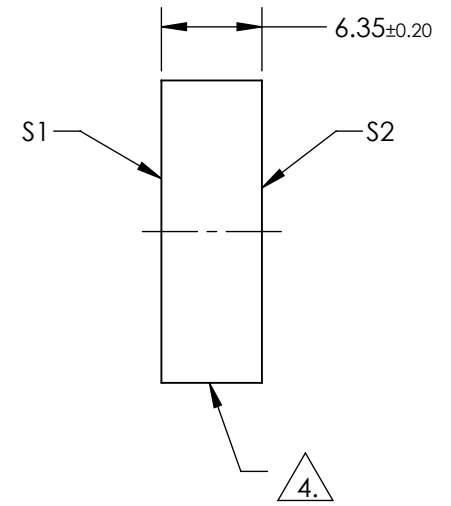
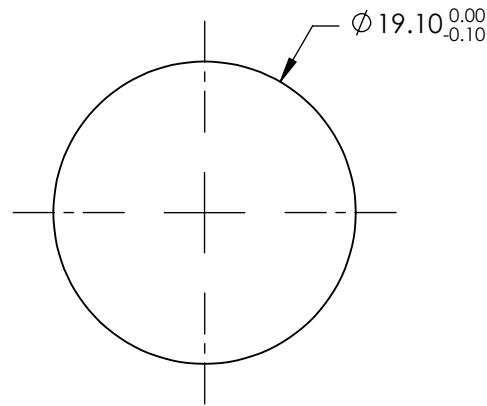


NOTES:

1. SUBSTRATE: FUSED SILICA
2. SURFACE S2 TO BE PARALLEL TO SURFACE S1 TO WITHIN <3 ARCMIN
3. COATING (APPLY ACROSS COATING APERTURE)  
 S1: Laser V-Coat (266nm)  
 R(ABS) <0.25% @ 266nm @ 0 ±5° AOI  
  
 DAMAGE THRESHOLD,  
 PULSED: 3 J/cm² @ 266nm, 20ns, 20Hz  
  
 S2: NONE

4. FINE GRIND SURFACE

5. ROHS: COMPLIANT



**FOR INFORMATION ONLY:  
DO NOT MANUFACTURE  
PARTS TO THIS DRAWING**

SPECIFICATIONS SUBJECT TO CHANGE WITHOUT NOTICE  
DIMENSIONS ARE FOR REFERENCE ONLY

	S1	S2
SHAPE	PLANO	PLANO
SURFACE QUALITY	10-5	10-5
CLEAR APERTURE	90 %	90 %
BEVEL	PROTECTIVE AS NEEDED	PROTECTIVE AS NEEDED



ALL DIMS IN mm

**EO**® Edmund Optics®

TITLE 19.1mm Dia. 266nm, Nd:YAG Laser Line Beam Sampler

DWG NO 38992

SHEET 1 OF 1