

NOTES:

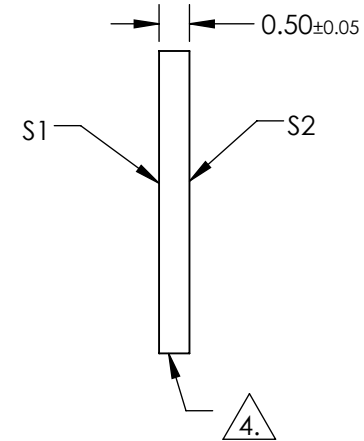
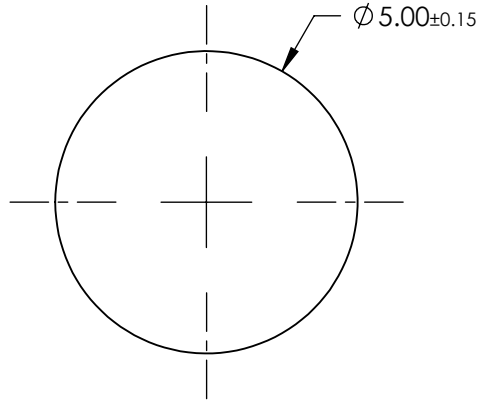
1. SUBSTRATE:
Sapphire (Al₂O₃)
2. SURFACE S2 TO BE PARALLEL WITH SURFACE S1 TO WITHIN ≤ 3.5 ARCMIN
3. COATING (APPLY ACROSS CLEAR APERTURE)

S1 & S2: R(ABS) ≤ 1.5% @ 750 - 800nm
 R(ABS) ≤ 1.0% @ 800 - 1550nm
 R(AVG)avg ≤ 0.7% @ 750 - 1550nm

 FINE GRIND SURFACE

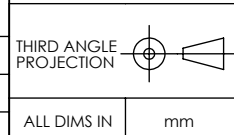
5. ROHS COMPLIANT

**FOR INFORMATION ONLY:
DO NOT MANUFACTURE
PARTS TO THIS DRAWING**



SPECIFICATIONS SUBJECT TO CHANGE WITHOUT NOTICE
 DIMENSIONS ARE FOR REFERENCE ONLY

	S1	S2
SHAPE	PLANO	PLANO
CLEAR APERTURE	Ø4.50	Ø4.50
SURFACE FLATNESS	2λ	2λ
SURFACE QUALITY	80-50	80-50
BIREFRINGENCE (n_o - n_e)	0.008	0.008
BEVEL	PROTECTIVE AS NEEDED	PROTECTIVE AS NEEDED



 **Edmund Optics®**

TITLE	5mm Dia., 0.5mm Thick, NIR II AR Coated Sapphire Window	
DWG NO	20904	SHEET 1 OF 1