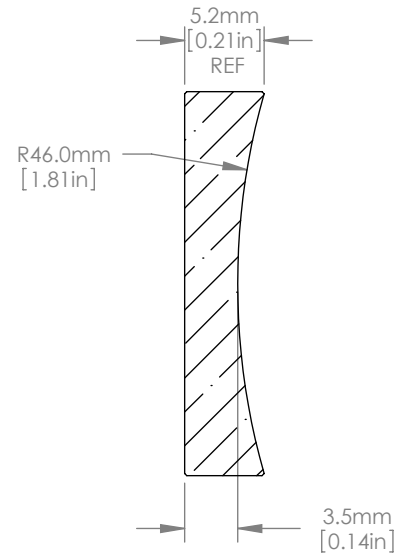
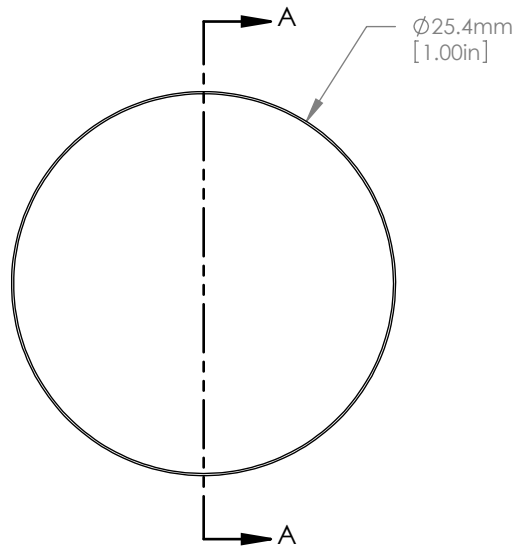




SCALE 1:1



NOTES/SPECIFICATIONS:

1. DESIGN WAVELENGTH: 588nm
2. FOCAL LENGTH: $f = -100.0\text{mm} \pm 1\%$
3. BACK FOCAL LENGTH(REF): $bf = -102.4\text{mm}$
4. CLEAR APERTURE: $>90\%$
5. SURFACE QUALITY: 40-20 SCRATCH-DIG
6. CENTRATION: $\leq 3\text{arcmin}$
7. DIAMETER TOLERANCE: $+0.0/-0.1\text{mm}$
8. THICKNESS TOLERANCE: $\pm 0.1\text{mm}$

FOR INFORMATION ONLY
NOT FOR MANUFACTURING PURPOSES

DRAWING PROJECTION			THORLABS www.thorlabs.com	
	NAME	DATE		
DRAWN	GG	15/NOV/10	D=25.4mm F=-100.0mm UVFS PLANO CONCAVE LENS	
APPROVAL	JC	13/DEC/10	MATERIAL	REV
COPYRIGHT © 2010 BY THORLABS			UV GRADE FUSED SILICA	B
VALUES IN PARENTHESIS ARE CALCULATED AND MAY CONTAIN ROUND OFF ERRORS			ITEM #	APPROX WEIGHT
			LC4888	0.02 kg