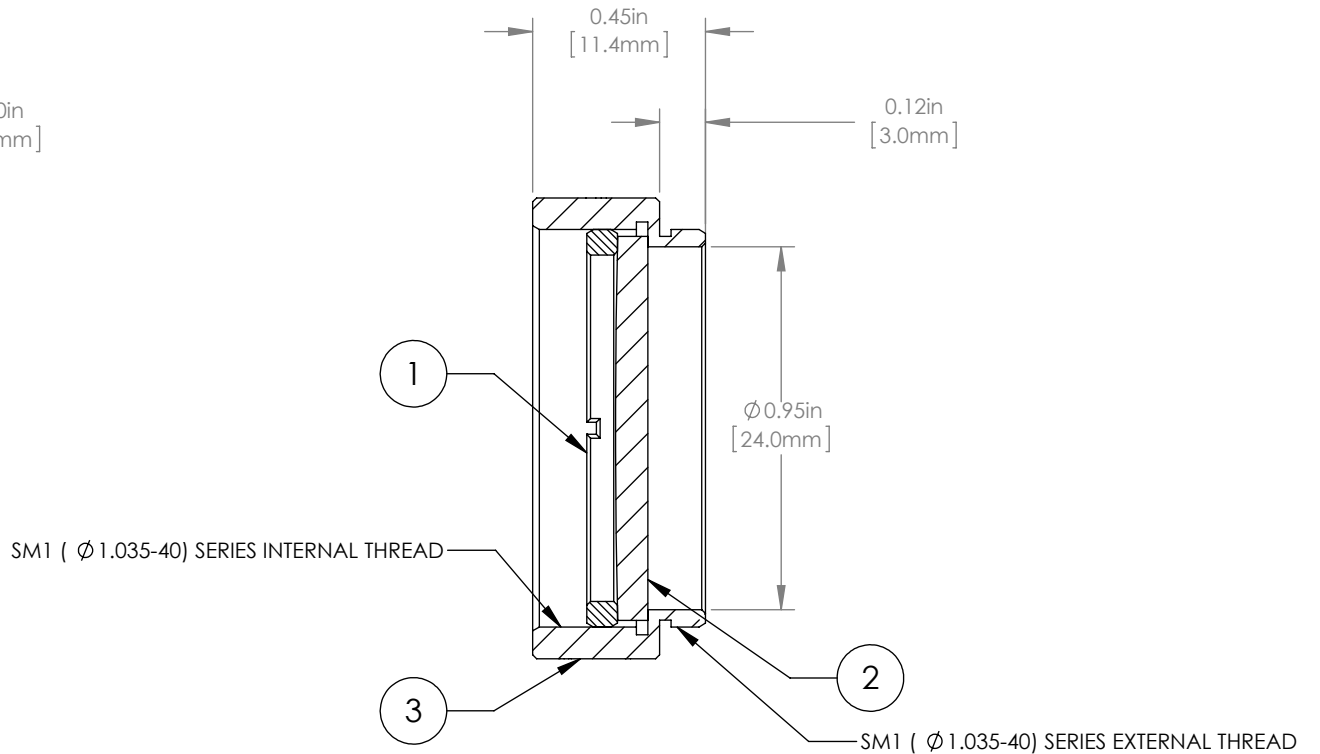
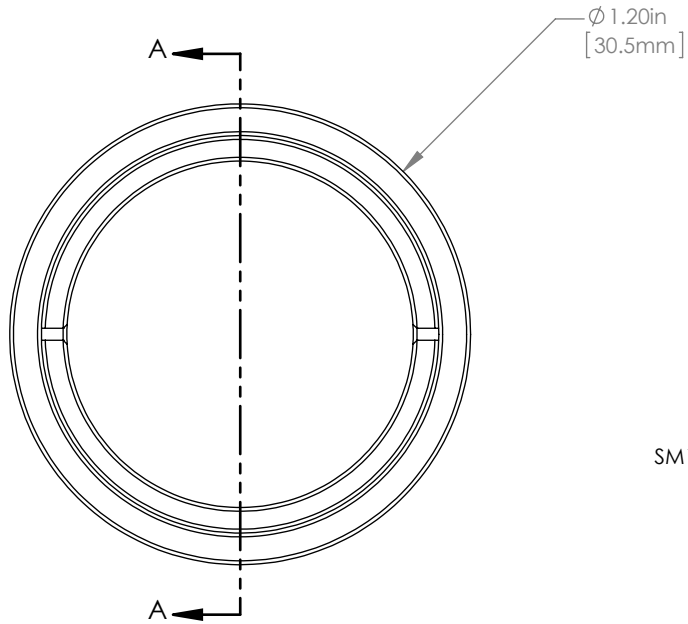


	PART DESCRIPTION	MATERIAL
①	SM1RR	ANODIZED ALUMINUM
②	LA1464-A	N-BK7
③	ENGRAVED HOUSING	ANODIZED ALUMINUM



NOTES/SPECIFICATIONS:

- DESIGN WAVELENGTH: 587.6nm
- FOCAL LENGTH: $f=996.7\text{mm} \pm 1\%$
- WORKING DISTANCE (REF): 991.5mm
- CLEAR APERTURE: $> \phi 22.86\text{mm}$
- SURFACE QUALITY: 40-20 SCRATCH-DIG
- CENTRATION: $< 3\text{arcmin}$
- COATING: BBAR $R_{\text{avg}} < 0.5\%$ FROM 350-700nm, AOI: 0° , ON OUTER OPTICAL SURFACES

FOR INFORMATION ONLY
NOT FOR MANUFACTURING PURPOSES

DRAWING PROJECTION						THORLABS www.thorlabs.com	
NAME	DATE	$\phi 1"$ MOUNTED PLANO CONVEX LENS, $f=1000\text{mm}$, -A COAT				MATERIAL	REV
DRAWN	GG	30/JUN/15	SEE TABLE				A
APPROVAL	DD	30/JUN/15	ITEM #				APPROX WEIGHT
COPYRIGHT © 2015 BY THORLABS		LA1464-A-ML				8 g	
VALUES IN PARENTHESIS ARE CALCULATED AND MAY CONTAIN ROUND OFF ERRORS							