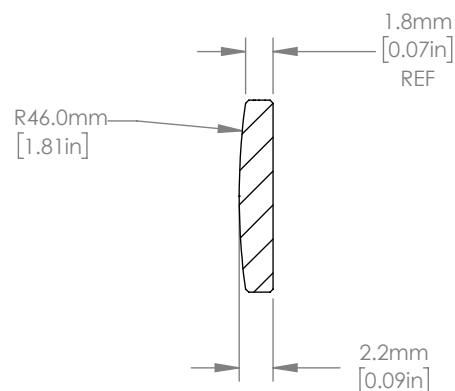
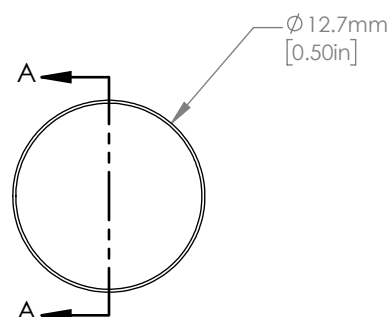




ISOMETRIC VIEW
SCALE: 2:1



SECTION A-A

NOTES/SPECIFICATIONS:

1. DESIGN WAVELENGTH: 587.6 nm
2. FOCAL LENGTH: $f=100.4 \text{ mm} \pm 1\%$
3. BACK FOCAL LENGTH(REF): $bf=98.8 \text{ mm}$
4. CLEAR APERTURE: $> \phi 11.43 \text{ mm}$
5. SURFACE QUALITY: 40-20 SCRATCH-DIG
6. CENTRATION: $<3 \text{ arcmin}$
7. DIAMETER TOLERANCE: $+0.0/-0.1 \text{ mm}$
8. THICKNESS TOLERANCE: $\pm 0.1 \text{ mm}$
9. COATING: BBAR $R_{avg} < 0.5\%$ FROM 1050-1700 nm, AOI: 0°

FOR INFORMATION ONLY
NOT FOR MANUFACTURING PURPOSES

DRAWING PROJECTION			 www.thorlabs.com	
NAME	DATE			
DRAWN	YB	16/NOV/21	$\phi 12.7 \text{ mm } f=100.4 \text{ mm}$ FUSED SILICA PLANO CONVEX LENS, -C COAT	
APPROVAL	DS	29/NOV/21	MATERIAL	REV
COPYRIGHT © 2021 BY THORLABS <small>VALUES IN PARENTHESIS ARE CALCULATED AND MAY CONTAIN ROUND OFF ERRORS</small>			UV FUSED SILICA	A
ITEM #		APPROX WEIGHT		
LA4600-C		0.56 g		