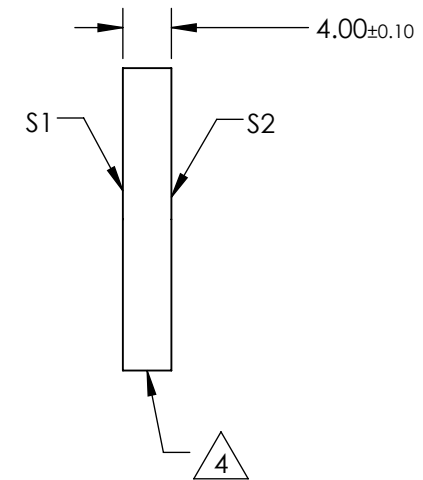
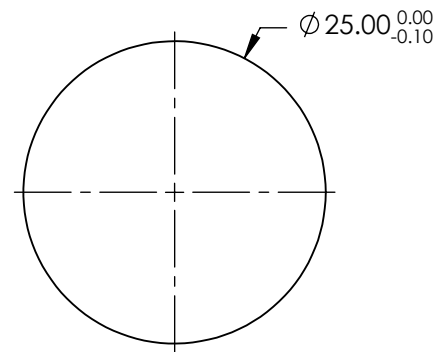
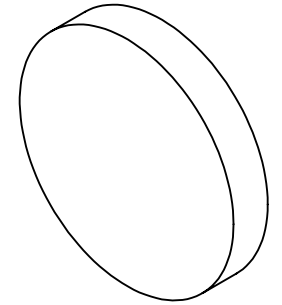


NOTES:

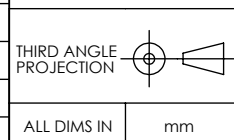
1. SUBSTRATE:  
FUSED SILICA (CORNING 7980)
2. S2 TO BE PARALLEL WITH S1 TO WITHIN <1' ARC/MIN
3. COATING (APPLY ACROSS CLEAR APERTURE)  
S1 & S2: R(AVG) ≤0.5% @ 600 - 1050nm
4. FINE GRIND SURFACE
5. ROHS COMPLIANT



**FOR INFORMATION ONLY:  
DO NOT MANUFACTURE  
PARTS TO THIS DRAWING**

SPECIFICATIONS SUBJECT TO CHANGE WITHOUT NOTICE  
DIMENSIONS ARE FOR REFERENCE ONLY

|                     | S1                   | S2                   |
|---------------------|----------------------|----------------------|
| SHAPE               | PLANO                | PLANO                |
| SURFACE QUALITY     | 40-20                | 40-20                |
| CLEAR APERTURE (mm) | Ø22.50               | Ø22.50               |
| BEVEL               | PROTECTIVE AS NEEDED | PROTECTIVE AS NEEDED |



|              |   |
|--------------|---|
|              |   |
| TITLE        | 25mm Dia., 4mm Thick, NIR I Coated, λ/4 Fused Silica Window |
| DWG NO       | 18342   |
| SHEET 1 OF 1 |   |