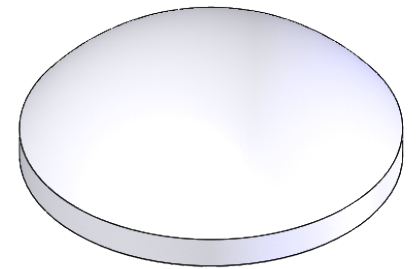


SECTION A-A



NOTES/SPECIFICATIONS:

1. DESIGN FREQUENCY: 500GHz (n=1.43)
2. FOCAL LENGTH: 75.0 mm \pm 2.0%
3. BACK FOCAL LENGTH(REF): 63.2 mm
4. CLEAR APERTURE: \varnothing 43.18 mm
5. SURFACE QUALITY: 60-40 SCRATCH-DIG
6. SURFACE IRREGULARITY: 10 μ m, CORRESPONDING TO $\lambda/6$ AT 500 GHz
7. CENTRATION: <3 arcmin
8. DIAMETER TOLERANCE: +0.0/-0.2 mm
9. CENTER THICKNESS TOLERANCE: \pm 0.20 mm
10. RADIUS OF CURVATURE TOLERANCE: \pm 0.50 mm

FOR INFORMATION ONLY
NOT FOR MANUFACTURING PURPOSES

DRAWING PROJECTION			THORLABS www.thorlabs.com PLANO CONVEX LENS f=75.0 mm \varnothing50.8 mm	
NAME	DATE			
DRAWN	DS	07/01/2019	MATERIAL Virgin Grade PTFE	
APPROVAL	BW	07/10/2019		
COPYRIGHT © 2019 BY THORLABS VALUES IN PARENTHESIS ARE CALCULATED AND MAY CONTAIN ROUND OFF ERRORS			ITEM #	APPROX WEIGHT
			LAT075	0.16 kg