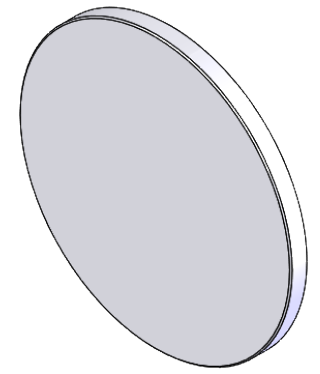


SECTION A-A



NOTES/ SPECIFICATIONS:

1. MATERIAL: VACUUM GRADE CALCIUM FLUORIDE
2. DESIGN WAVELENGTH: 588.0 nm
3. FOCAL LENGTH: 1000.0 mm \pm 1.0%
4. BACK FOCAL LENGTH (REF.): 998.1 mm
5. CLEAR APERTURE: $> \varnothing 45.72$ mm
6. SURFACE QUALITY: 40-20 SCRATCH-DIG
7. CENTRATION: < 3 arcmin
8. DIAMETER TOLERANCE: $+0.0/-0.1$ mm
9. THICKNESS TOLERANCE: ± 0.1 mm

FOR INFORMATION ONLY
NOT FOR MANUFACTURING PURPOSES

DRAWING PROJECTION			THORLABS www.thorlabs.com	
NAME	DATE			
DRAWN	JAC	06/JUL/19	$\varnothing 50.8$ mm CaF ₂ PLANO-CONVEX Lens, f=1000.0 mm, UNCOATED	
APPROVAL	DD	10/JUL/19	MATERIAL	REV
COPYRIGHT © 2019 BY THORLABS			SEE NOTES	A
VALUES IN PARENTHESIS ARE CALCULATED AND MAY CONTAIN ROUND OFF ERRORS			ITEM #	APPROX WEIGHT
			LA5200	22 g