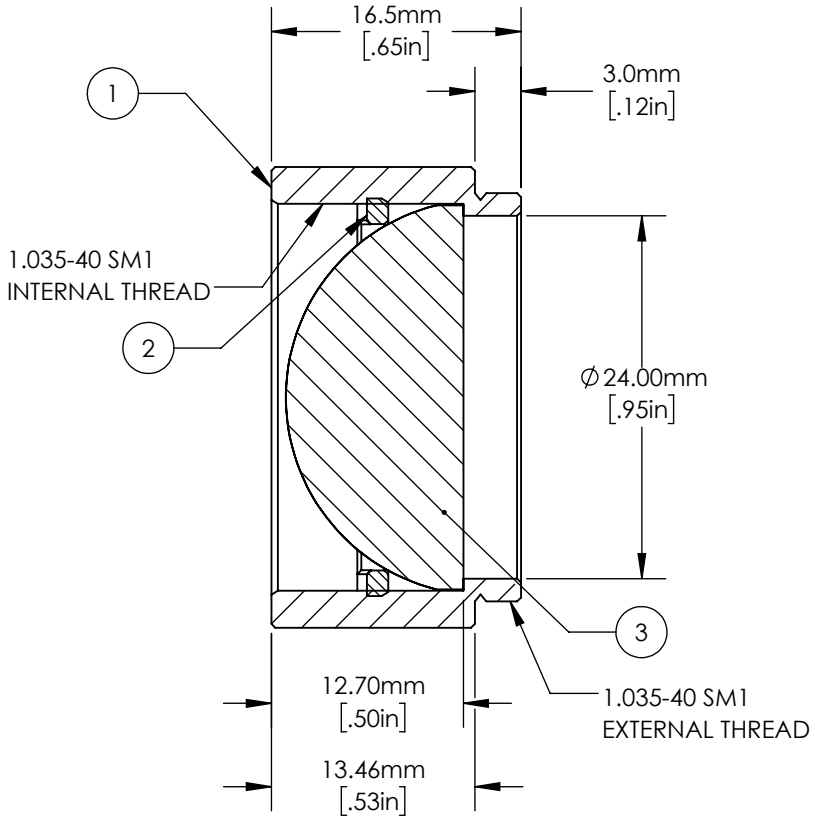
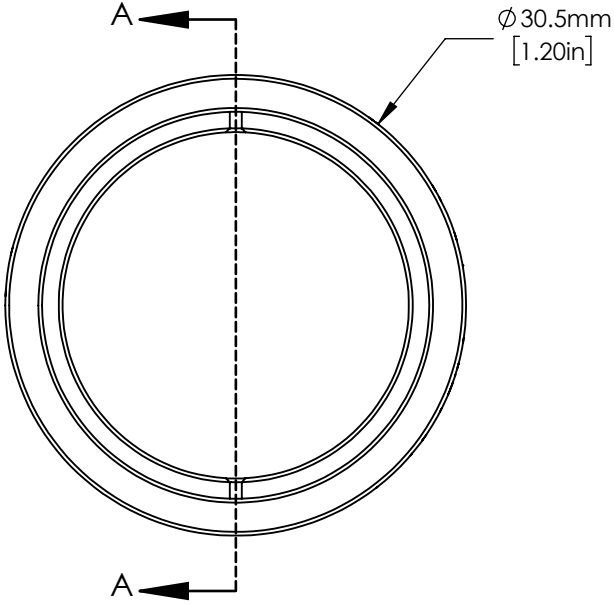


	PART DESCRIPTION	MATERIAL
①	ENGRAVED SM1L05	ANODIZED ALUMINUM
②	SM1RR	ANODIZED ALUMINUM
③	LA1951-A	N-BK7



SECTION A-A
SCALE 2 : 1

NOTES/SPECIFICATIONS:

- DESIGN WAVELENGTH: 633 nm
- FOCAL LENGTH: $f = 25.4 \text{ mm} \pm 1\%$
- WORKING DISTANCE: 13.8 mm
- CLEAR APERTURE: $> \varnothing 22.86 \text{ mm}$
- SURFACE QUALITY: 40-20 SCRATCH-DIG
- COATING: BBAR $R_{avg} < 0.5\%$ FROM 350 nm-700 nm, 0 AOI, ON OUTER OPTICAL SURFACES

FOR INFORMATION ONLY
NOT FOR MANUFACTURING PURPOSES

DRAWING PROJECTION			THORLABS www.thorlabs.com	
NAME	DATE	PLANO-CONVEX LENS, $\varnothing 1"$, SM1-THREADED MOUNT, $f = 25.4 \text{ mm}$, A-COAT		
DRAWN	CR	27/JUN/12	MATERIAL	SEE TABLE
APPROVAL	BAG	24/NOV/21	ITEM #	LA1951-A-ML
COPYRIGHT © 2021 BY THORLABS			APPROX WEIGHT	0.041 kg
VALUES IN PARENTHESIS ARE CALCULATED AND MAY CONTAIN ROUND OFF ERRORS			REV	B