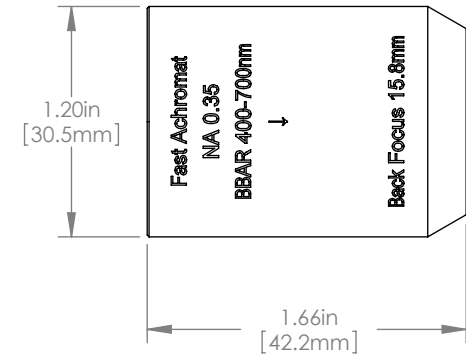
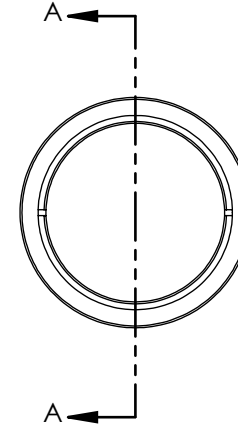
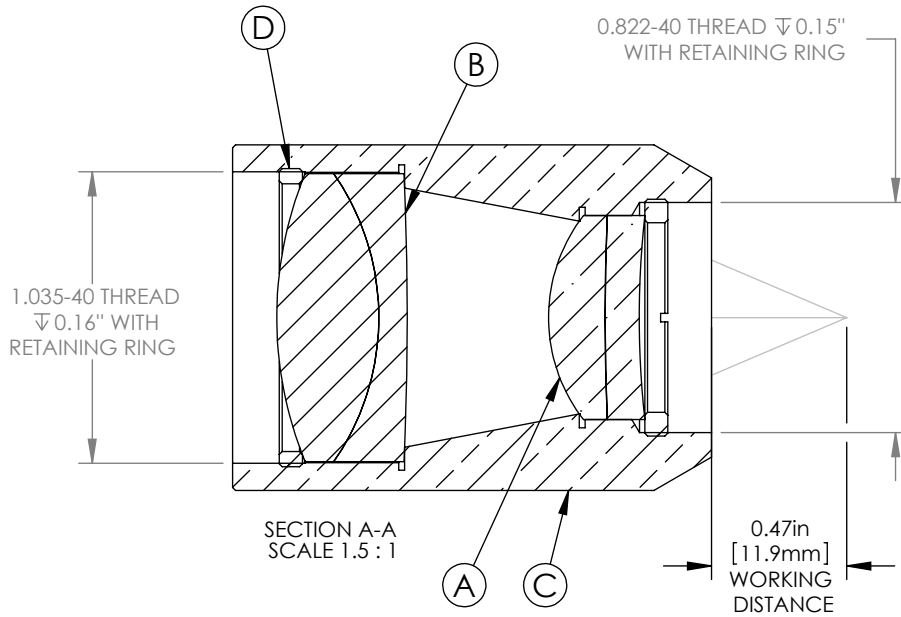
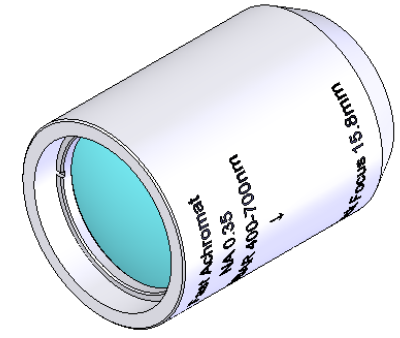


	ITEM	MATERIAL
(A)	DOUBLET 1	N-BK7 & N-SF2
(B)	DOUBLET 2	N-BAF10 & SF10
(C)	HOUSING	CHROME PLATED BRASS
(D)	RETAINING RING	CHROME PLATED BRASS

1:1 ISOMETRIC VIEW



NOTES/SPECIFICATIONS:

- DESIGN WAVELENGTHS: 486.1nm, 587.6nm, 656.3nm
- FOCAL LENGTH: 29.0mm
- NUMERICAL APERTURE: 0.35
- CLEAR APERTURE: 23.38mm
- COATING: BBAR  $R_{avg} < 0.5\%$  FROM 400-700nm

FOR INFORMATION ONLY  
NOT FOR MANUFACTURING PURPOSES

DRAWING PROJECTION						<b>THORLABS</b> www.thorlabs.com	
NAME	DATE	FAST ACHROMATIC DOUBLET PAIR f=29.0mm BBAR 400-700nm				REV	B
DRAWN	SFG	18/FEB/11	MATERIAL				SEE TABLE
APPROVAL	PM	23/FEB/11	ITEM #				FAC1025-A
COPYRIGHT © 2011 BY THORLABS		VALUES IN PARENTHESIS ARE CALCULATED AND MAY CONTAIN ROUND OFF ERRORS		APPROX WEIGHT		0.14 kg	