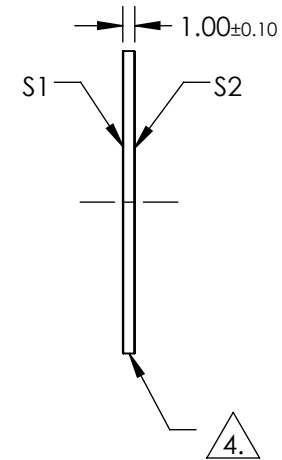
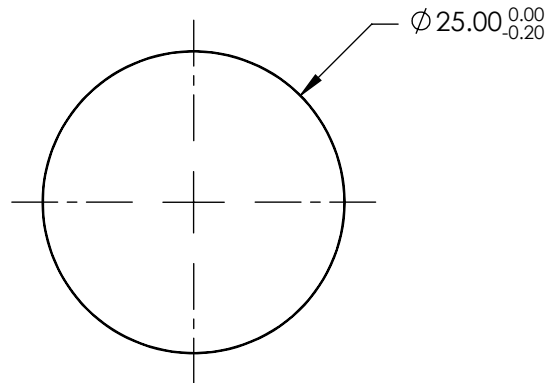


NOTES:

1. SUBSTRATE:  
UV GRADE FUSED SILICA
2. COATING (APPLY ACROSS COATING APERTURE):  
S1 & S2: YAG-BBAR (500 - 1100nm)  
R(ABS) < 0.25% @ 532nm @ 0° AOI  
R(ABS) < 0.25% @ 1064nm @ 0° AOI  
R(AVG) < 1.0% FROM 500-1100nm @ 0° AOI
3. SURFACE S2 TO BE PARALLEL TO SURFACE S1 TO WITHIN <5 ARCSEC

4. FINE GRIND SURFACE

5. ROHS COMPLIANT

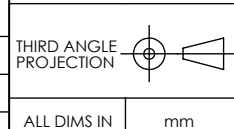


**FOR INFORMATION ONLY:  
DO NOT MANUFACTURE  
PARTS TO THIS DRAWING**

SPECIFICATIONS SUBJECT TO CHANGE WITHOUT NOTICE  
DIMENSIONS ARE FOR REFERENCE ONLY

**EO**® Edmund Optics®

	S1	S2
SHAPE	PLANO	PLANO
SURFACE QUALITY	20-10	20-10
CLEAR APERTURE	$\phi 20.00$	$\phi 20.00$
BEVEL	PROTECTIVE AS NEEDED	PROTECTIVE AS NEEDED



TITLE	25mm Dia., 1mm Thick, YAG-BBAR Coated $\lambda/10$ Fused Silica Window		
DWG NO	13353	SHEET	1 OF 1