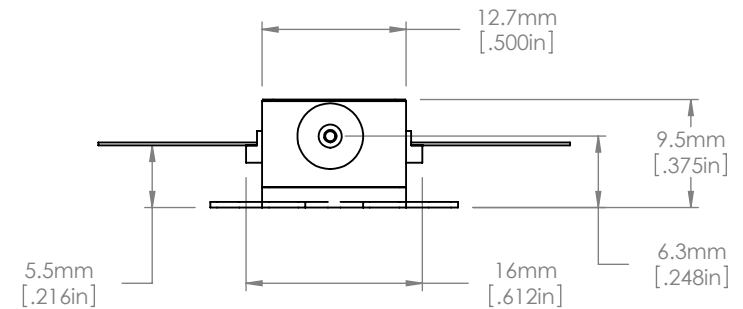
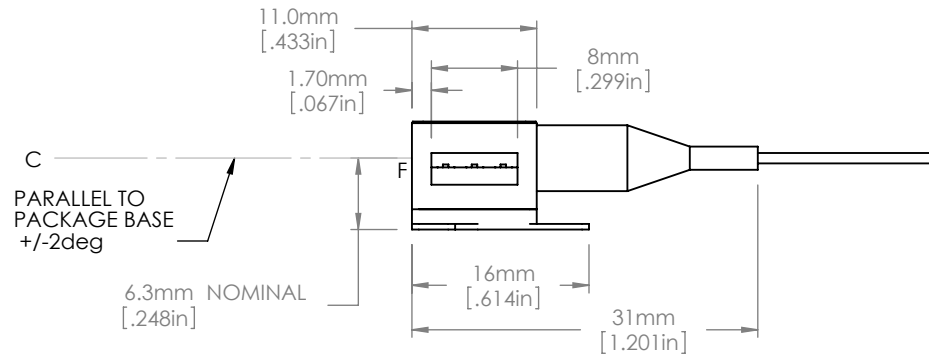


PIN IDENTIFICATION

1. TEC +
2. Thermistor
3. Thermistor
4. Dev Anode
5. Dev Cathode
6. TEC -



NOTES :

1. F DENOTES EMISSION POINT FROM CHIP FACET
C DENOTES CENTRAL AXIS FOR EMERGENT BEAM
2. DEVICE IS PROVIDED WITH A 1500mm LENGTH FIBER TAIL TERMINATED IN AN FC/APC CONNECTOR; THE FIBER IS CORNING SMF28E TYPE WITH THE FIRST 1000mm LENGTH CLOSEST TO THE DEVICE PROTECTED BY 900 μm DIAMETER LOOSE TUBE AND THE REMAINING 500mm TO THE CONECTOR AS PRIMARY COATED FIBER.

FOR INFORMATION ONLY
NOT FOR MANUFACTURING PURPOSES

DRAWING PROJECTION				 www.thorlabs.com	
NAME	DATE	SAF GAIN CHIP ASSEMBLY (1550nm)			
DRAWN	AD	24/JUN/10	MATERIAL	N/A	REV A
APPROVAL	JW	24/JUN/10	ITEM # SAF1176S		APPROX WEIGHT 0.018 kg
COPYRIGHT © 2010 BY THORLABS					
VALUES IN PARENTHESIS ARE CALCULATED AND MAY CONTAIN ROUND OFF ERRORS					