
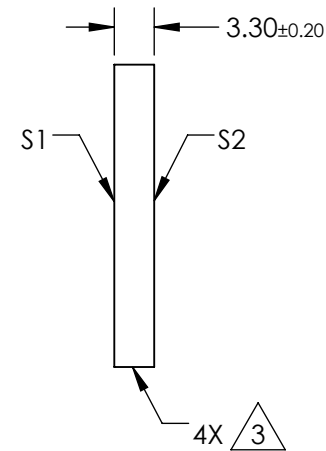
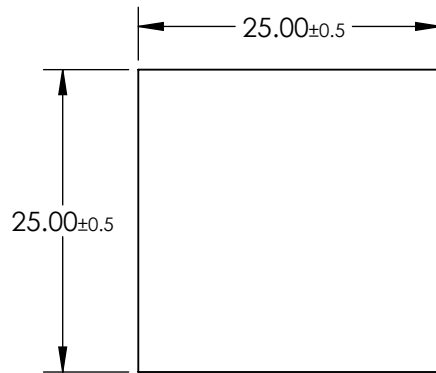
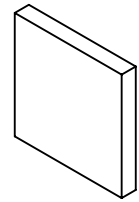


NOTES:

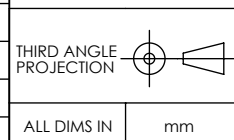
1. SUBSTRATE: BOROFLOAT®
2. COATING (APPLY ACROSS CLEAR APERTURE):
S1 & S2: R(AVG) <1.0% @ 700 - 1150nm
3.  FINE GRIND SURFACE
4. ROHS COMPLIANT



**FOR INFORMATION ONLY:
DO NOT MANUFACTURE
PARTS TO THIS DRAWING**

SPECIFICATIONS SUBJECT TO CHANGE WITHOUT NOTICE
DIMENSIONS ARE FOR REFERENCE ONLY

| | S1 | S2 |
|------------------|----------------------|----------------------|
| SHAPE | PLANO | PLANO |
| SURFACE FLATNESS | 4 - 6λ | 4 - 6λ |
| SURFACE QUALITY | 80-50 | 80-50 |
| CLEAR APERTURE | 22.50 x 22.50 | 22.50 x 22.50 |
| BEVEL | PROTECTIVE AS NEEDED | PROTECTIVE AS NEEDED |



| | |
|---|---|
|  Edmund Optics® | |
| TITLE | 25 x 25 x 3.3mm THICKNESS, NIR COATED, BOROFLOAT® WINDOW |
| DWG NO | 12191 |
| | SHEET 1 OF 1 |