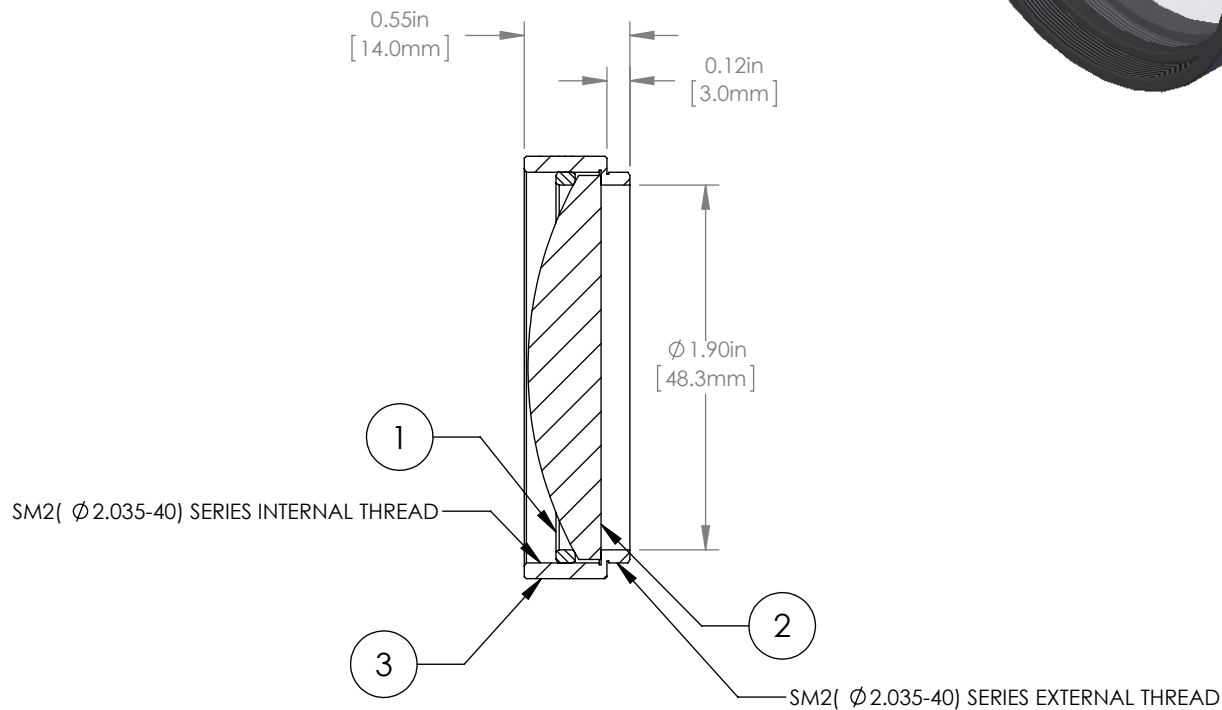
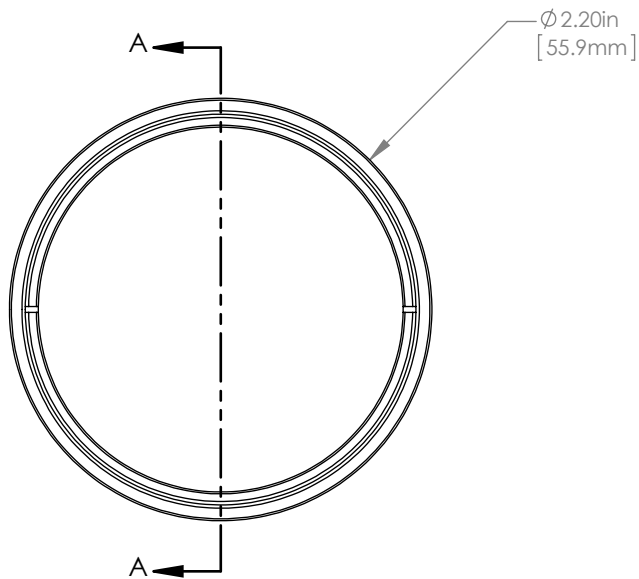


	PART DESCRIPTION	MATERIAL
①	SM2RR	ANODIZED ALUMINUM
②	LA1050-A	N-BK7
③	ENGRAVED HOUSING	ANODIZED ALUMINUM



NOTES/SPECIFICATIONS:

- DESIGN WAVELENGTH: 633nm
- FOCAL LENGTH: $f=100.0\text{mm} \pm 1\%$
- WORKING DISTANCE (REF): 89.8mm
- CLEAR APERTURE: $> \text{Ø} 45.72\text{mm}$
- SURFACE QUALITY: 40-20 SCRATCH-DIG
- COATING: BBAR $R_{\text{avg}} < 0.5\%$ FROM 350-700nm, AOI: 0° , ON OUTER OPTICAL SURFACES

FOR INFORMATION ONLY
NOT FOR MANUFACTURING PURPOSES

DRAWING PROJECTION						THORLABS www.thorlabs.com	
NAME	DATE	$\text{Ø} 2''$ MOUNTED PLANO-CONVEX LENS, $f=100\text{mm}$, -A COAT				MATERIAL	REV
DRAWN	15/OCT/15	SEE TABLE					A
APPROVAL	15/OCT/15	ITEM #				APPROX WEIGHT	
COPYRIGHT © 2015 BY THORLABS <small>VALUES IN PARENTHESIS ARE CALCULATED AND MAY CONTAIN ROUND OFF ERRORS</small>		LA1050-A-ML				47 g	