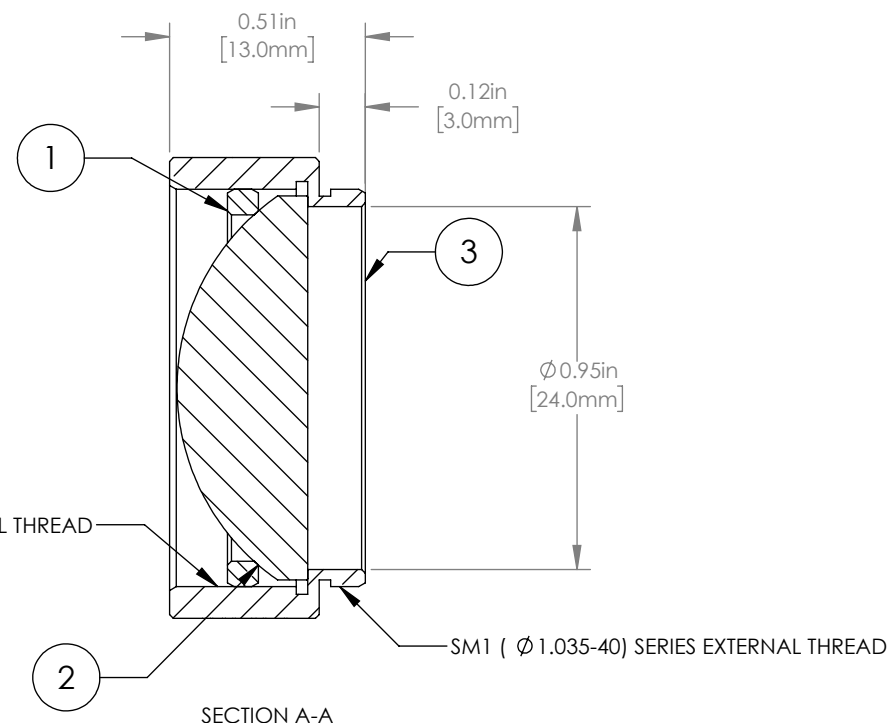
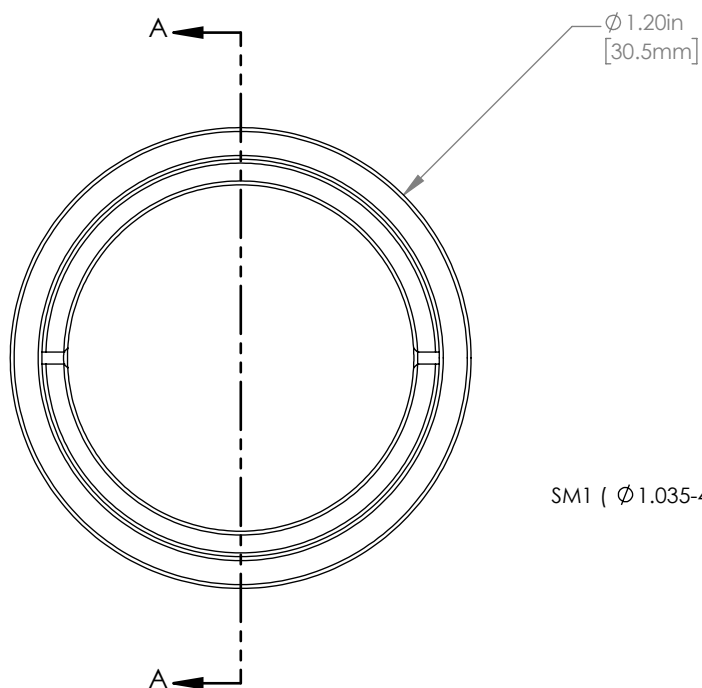


	PART DESCRIPTION	MATERIAL
①	SM1RR	ANODIZED ALUMINUM
②	LA1805-C	N-BK7
③	ENGRAVED HOUSING	ANODIZED ALUMINUM



NOTES/SPECIFICATIONS:

1. DESIGN WAVELENGTH: 587.6 nm
2. FOCAL LENGTH: $f=29.9\text{ mm} \pm 1\%$
3. WORKING DISTANCE (REF): 20.4 mm
4. CLEAR APERTURE: $\phi 22.9\text{ mm}$
5. SURFACE QUALITY: 40-20 SCRATCH-DIG
6. COATING: BBAR $<0.5\%$ FROM 1050 nm-1700 nm, 0° AOI, ON BOTH OPTICAL SURFACES

FOR INFORMATION ONLY
NOT FOR MANUFACTURING PURPOSES

DRAWING PROJECTION				
	NAME	DATE	THORLABS www.thorlabs.com MOUNTED $\phi 1'' f=30\text{ mm}$ PLANO CONVEX LENS, -C COATED	
DRAWN	GG	20/JAN/20		
APPROVAL	DD	20/JAN/20		
COPYRIGHT © 2020 BY THORLABS			MATERIAL	REV
VALUES IN PARENTHESIS ARE CALCULATED AND MAY CONTAIN ROUND OFF ERRORS			SEE TABLE	A
ITEM #		APPROX WEIGHT		
LA1805-C-ML		14 g		