

NOTES:

- 1. SUBSTRATE:
SAPPHIRE (AL₂O₃)
- 2. SURFACE S2 TO BE PARALLEL WITH SURFACE S1 TO WITHIN ≤ 3.5 ARCMIN
- 3. COATING (APPLY ACROSS CLEAR APERTURE)

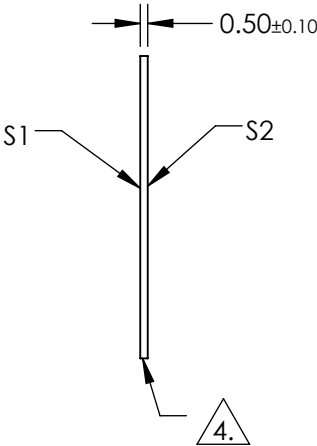
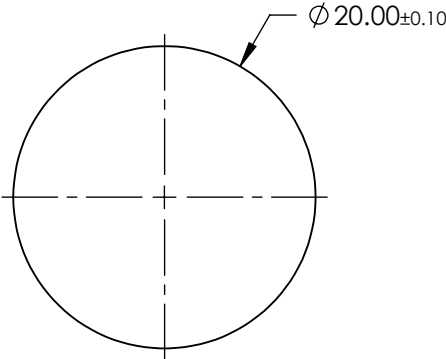
S1 & S2: R(AVG) <1.5% @ 2000-5000nm
R(ABS) <3.0% @ 2000-5000nm
R(AVG) <1.75% @ 2000-4000nm



FINE GRIND SURFACE

- 5. ROHS COMPLIANT

**FOR INFORMATION ONLY:
DO NOT MANUFACTURE
PARTS TO THIS DRAWING**



SPECIFICATIONS SUBJECT TO CHANGE WITHOUT NOTICE
DIMENSIONS ARE FOR REFERENCE ONLY

	S1	S2
SHAPE	PLANO	PLANO
CLEAR APERTURE	Ø18.00	Ø18.00
SURFACE FLATNESS	2λ	2λ
SURFACE QUALITY	80-50	80-50
BIREFRINGENCE (n _o -n _e)	0.008	0.008
BEVEL	PROTECTIVE AS NEEDED	PROTECTIVE AS NEEDED



ALL DIMS IN mm

TITLE

20mm Dia., 0.5mm Thick, BBAR (2000-5000nm)
AR Coated Sapphire Window

DWG NO

21022

SHEET
1 OF 1