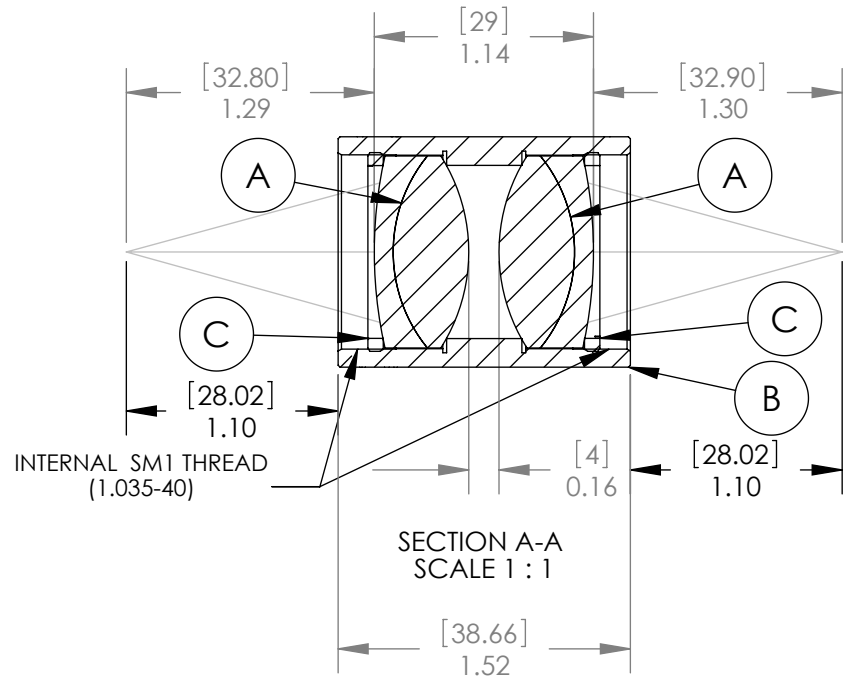
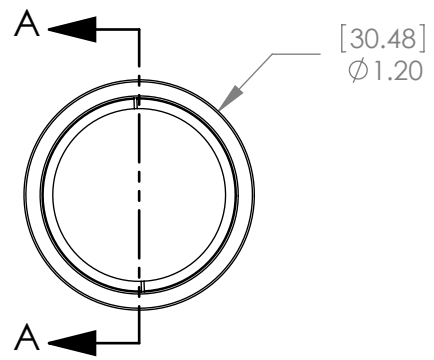


PART	PART NO.	MATERIAL
A	AC254-040-A1	BK7-SF5
B	LENS MOUNT	6061-T6 ALUMINUM
C	SM1RR	6061-T6 ALUMINUM



**SPECIFICATIONS:**

DESIGN WAVELENGTH: 486.1, 587.6 & 656.3nm  
 COATING: BBAR 400-700nm  
 COATING RANGE: R(AVG)<0.5% FROM 400-700nm  
 MAGNIFICATION: 1:1

Dimensions are in  $\frac{[mm]}{in}$

NOTE:  
 FOR INFORMATION ONLY. NOT INTENDED FOR MANUFACTURING.

**THORLABS INC.** PO BOX 366  
 NEWTON NJ

	NAME	DATE
DRAWN	AP	04/14/06
ENG APPR.	TO	04/14/06
MFG APPR.	TO	04/14/06

TITLE: MATCHED ACHROMAT PAIRS  
 F1=40mm, F2=40mm

MATERIAL: SEE TABLE  
 SIZE: A C

SCALE: 2:1 SHEET 1 OF 1

DWG. NO. 13322-E01  
 PART NO. MAP104040-A1

**PROPRIETARY AND CONFIDENTIAL**  
 THE INFORMATION CONTAINED IN THIS DRAWING IS THE SOLE PROPERTY OF THORLABS, INC. ANY REPRODUCTION IN PART OR AS A WHOLE WITHOUT THE WRITTEN PERMISSION OF THORLABS, INC. IS PROHIBITED.