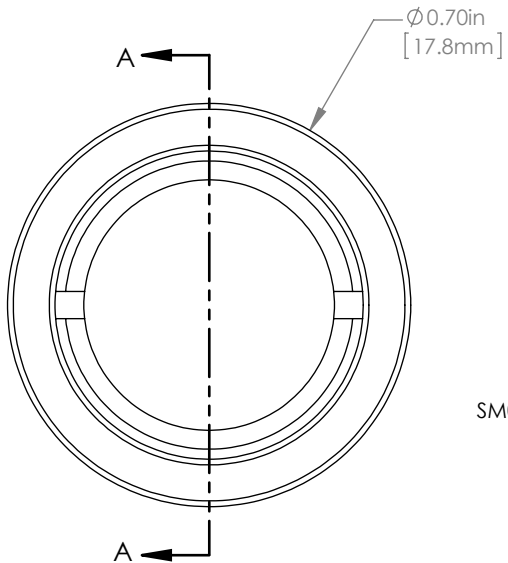
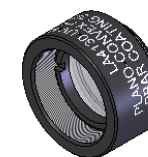
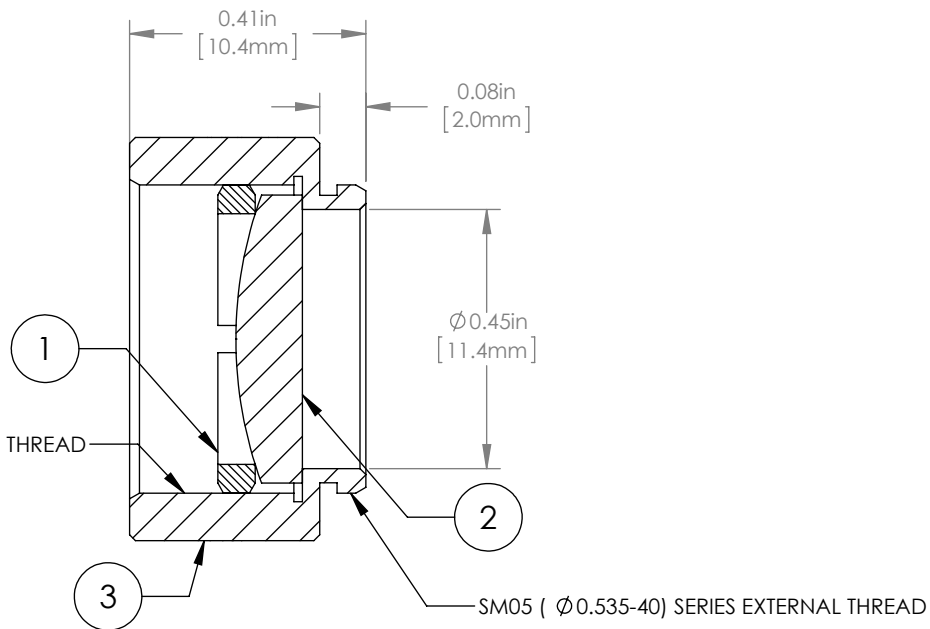


	PART DESCRIPTION	MATERIAL
①	SM05RR	ANODIZED ALUMINUM
②	LA4130-UV	UV FUSED SILICA
③	ENGRAVED HOUSING	ANODIZED ALUMINUM



SM05 (ϕ 0.535-40) SERIES INTERNAL THREAD



NOTES/SPECIFICATIONS:

1. DESIGN WAVELENGTH: 546nm
2. FOCAL LENGTH: $f=40.0\text{mm} \pm 1\%$
3. WORKING DISTANCE (REF): 35.2mm
4. CLEAR APERTURE: $> \phi 11.05\text{mm}$
5. SURFACE QUALITY: 40-20 SCRATCH-DIG
6. COATING: BBAR $R_{\text{avg}} < 0.5\%$ FROM 245-400nm, AOI: 0° , ON OUTER OPTICAL SURFACES

FOR INFORMATION ONLY
NOT FOR MANUFACTURING PURPOSES

DRAWING PROJECTION			THORLABS www.thorlabs.com $\phi 1/2"$ MOUNTED PLANO-CONVEX LENS, $f=40\text{mm}$, -UV COAT	
NAME	DATE			
DRAWN	GG	13/OCT/15	MATERIAL	
APPROVAL	DD	13/OCT/15		
COPYRIGHT © 2015 BY THORLABS			SEE TABLE	
VALUES IN PARENTHESIS ARE CALCULATED AND MAY CONTAIN ROUND OFF ERRORS			ITEM #	APPROX WEIGHT
			LA4130-UV-ML	4 g

REV A