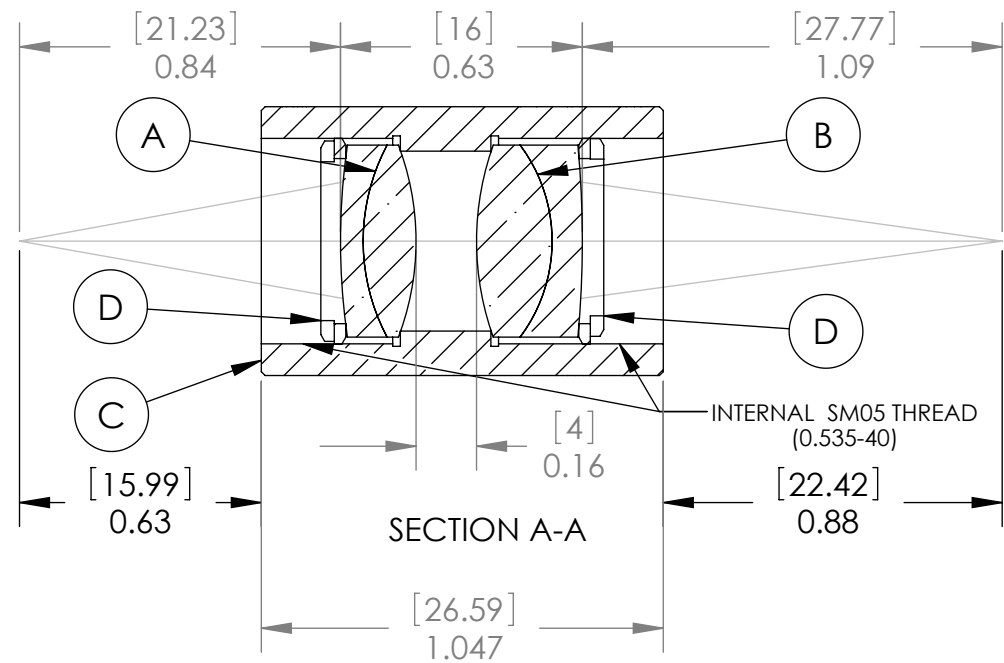
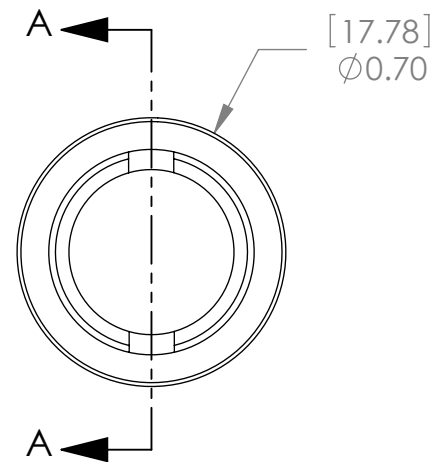


PART	PART NO.	MATERIAL
A	AC127-025-A1	BAF10-SF10
B	AC127-030-A1	BK7-SF2
C	LENS MOUNT	6061-T6 ALUMINUM
D	SM05RR	6061-T6 ALUMINUM



SPECIFICATIONS:

DESIGN WAVELENGTH: 486.1, 587.6 & 656.3nm

COATING: BBAR 400-700nm

COATING RANGE: R(AVG)<0.5% FROM 400-700nm

MAGNIFICATION: 1:1.2

Dimensions are in  $\frac{[mm]}{in}$

NOTE:  
FOR INFORMATION ONLY. NOT INTENDED FOR MANUFACTURING.

THORLABS INC. PO BOX 366  
NEWTON NJ

TITLE:		MATCHED ACHROMAT PAIR	
		F1=25mm, F2=30mm	
MATERIAL:		SEE TABLE	SIZE A
			REV. C
SCALE: 2:1		SHEET 1 OF 1	
DWG. NO.		PART NO.	
13315-E01		MAP052530-A1	

	NAME	DATE
DRAWN	AP	04/14/06
ENG APPR.	TO	04/14/06
MFG APPR.	TO	04/14/06
<b>PROPRIETARY AND CONFIDENTIAL</b> THE INFORMATION CONTAINED IN THIS DRAWING IS THE SOLE PROPERTY OF THORLABS, INC. ANY REPRODUCTION IN PART OR AS A WHOLE WITHOUT THE WRITTEN PERMISSION OF THORLABS, INC. IS PROHIBITED.		