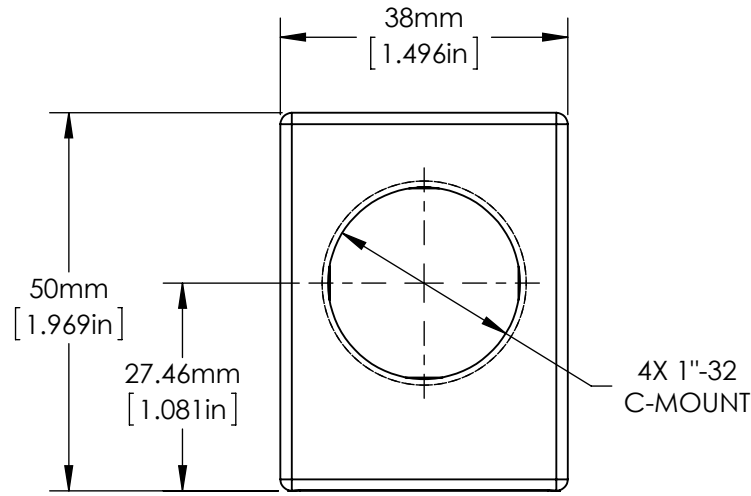


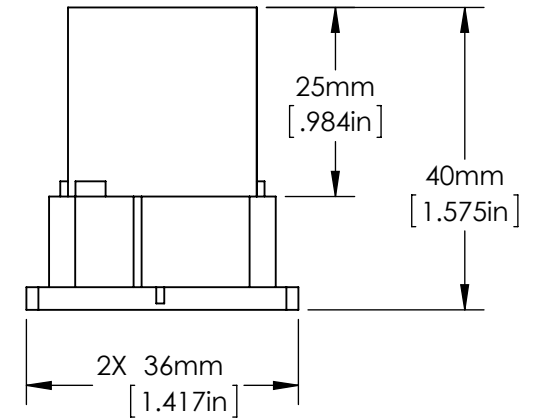
NOTES:

1. BEAMSPLITTER SUBSTRATE MATERIAL:
SCHOTT: N-BK7 517/642
EQUIVALENT SUBSTITUTIONS ALLOWED

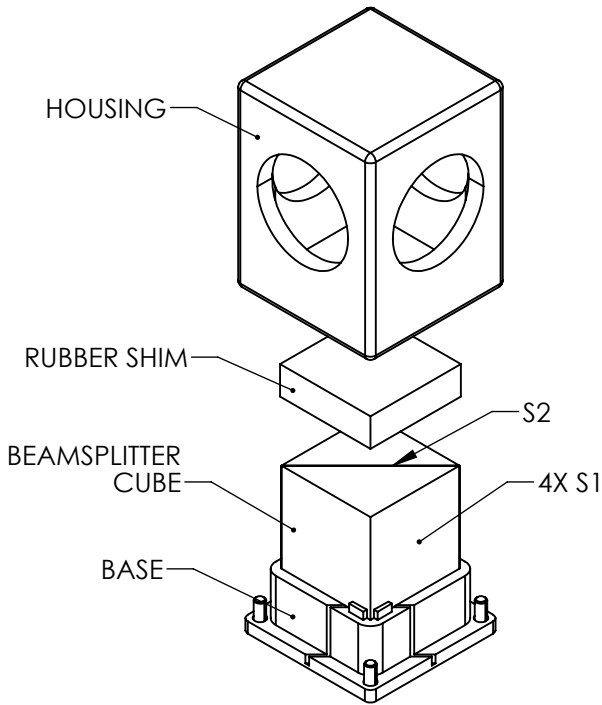
HOUSING MATERIAL: BLACK ANODIZED ALUMINUM
2. CENTERING TOLERANCE (AT 587.6nm):
CUBE BEAM DEVIATION: <3 arc min.
3. COATING (APPLY ACROSS CLEAR APERTURE)
S1: 1/4 WAVE MGF2 @ 550nm
S2: MULTILAYER DIELECTRIC TO ACHIEVE
R(ABS) = 50% ± 5% @ 550nm
T(ABS) = 50% ± 5% @ 550nm
R(AVG) = 50% ± 10% FROM 400 TO 700nm
T(AVG) = 50% ± 10% FROM 400 TO 700nm
4. INCLUDES 1 REMOVEABLE CAP (NOT SHOWN)



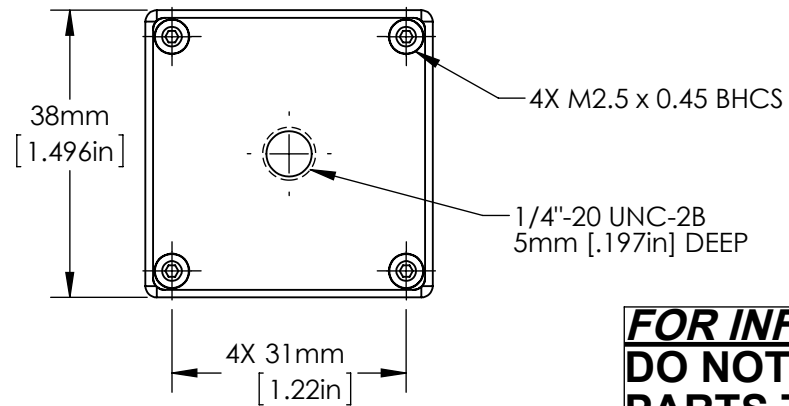
COMPLETE ASSEMBLY



BASE AND BEAMSPLITTER




PARTIAL EXPLODED VIEW



**FOR INFORMATION ONLY:
DO NOT MANUFACTURE
PARTS TO THIS DRAWING**

SPECIFICATIONS SUBJECT TO CHANGE WITHOUT NOTICE
DIMENSIONS ARE FOR REFERENCE ONLY

	S1	S2	EFL (AT 587.6nm)	NA	 Edmund Optics®	
SHAPE	PLANO	PLANO	BFL (AT 587.6nm)	NA		
SURFACE ACCURACY AT 632.8nm (P-V)	1/4 WAVE	1/4 WAVE	ALL DIMS IN	mm	DWG NO	54823
SURFACE QUALITY	60 - 40	60 - 40				
MIN CLEAR APERTURE	24.0 x 24.0mm	34.3 x 24.0mm				
						SHEET 1 OF 1