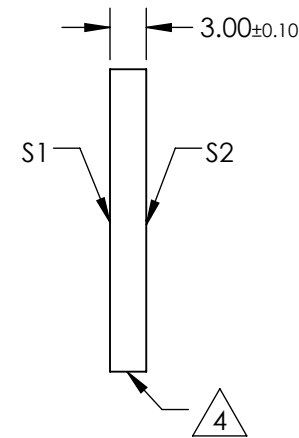
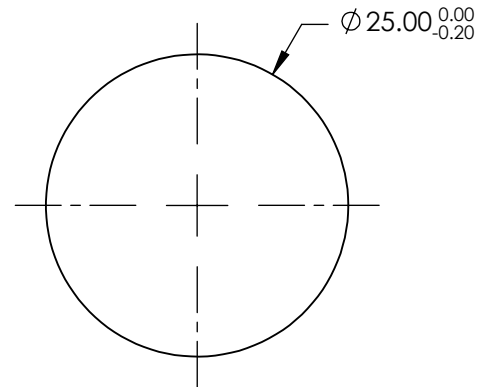
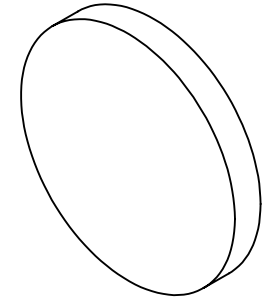


NOTES:

1. SUBSTRATE: UV GRADE FUSED SILICA
2. COATING (APPLY ACROSS CLEAR APERTURE)  
 S1 & S2: RABS  $\leq 0.25\%$  @ 880nm  
 RAVG  $\leq 1.25\%$  @ 400 - 870nm  
 RAVG  $\leq 1.25\%$  @ 890 - 1000nm
3. SURFACE S2 TO BE PARALLEL WITH S1 TO  $< 5$  ARCSEC
4. FINE GRIND SURFACE
5. RoHS COMPLIANT



**FOR INFORMATION ONLY:  
DO NOT MANUFACTURE  
PARTS TO THIS DRAWING**

SPECIFICATIONS SUBJECT TO CHANGE WITHOUT NOTICE  
DIMENSIONS ARE FOR REFERENCE ONLY

	S1	S2
SHAPE	PLANO	PLANO
SURFACE QUALITY	20-10	20-10
CLEAR APERTURE	Ø20.00	Ø20.00
BEVEL	PROTECTIVE AS NEEDED	PROTECTIVE AS NEEDED

THIRD ANGLE PROJECTION

ALL DIMS IN mm

Edmund Optics®

TITLE

25mm DIA., 3mm THICK, VIS-NIR COATED  $\lambda/10$   
FUSED SILICA WINDOW

DWG NO

84455

SHEET  
1 OF 1