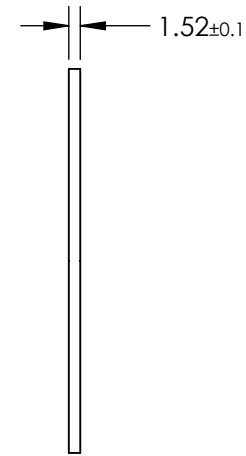
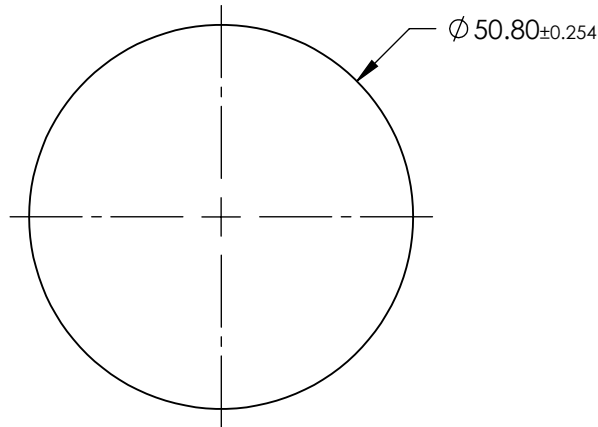


NOTES:

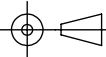
- 1. SUBSTRATE: Polycarbonate
- 2. COATING (APPLY ACROSS CLEAR APERTURE)
 - S1 & S2: BBAR (400-1000nm)
 - R(AVG) ≤ 1.25% @ 400 - 1000nm
- 3. ROHS COMPLIANT



**FOR INFORMATION ONLY:
DO NOT MANUFACTURE
PARTS TO THIS DRAWING**

SPECIFICATIONS SUBJECT TO CHANGE WITHOUT NOTICE
DIMENSIONS ARE FOR REFERENCE ONLY

EO® Edmund Optics®

	S1	S2	THIRD ANGLE PROJECTION 		TITLE	2" Diameter, BBAR (400-1000nm) Coated, Plastic Polycarbonate Window	
SHAPE	PLANO	PLANO			ALL DIMS IN	mm	DWG NO
CLEAR APERTURE	Ø 45.72	Ø 45.72					
BEVEL	PROTECTED AS NEEDED	PROTECTED AS NEEDED					