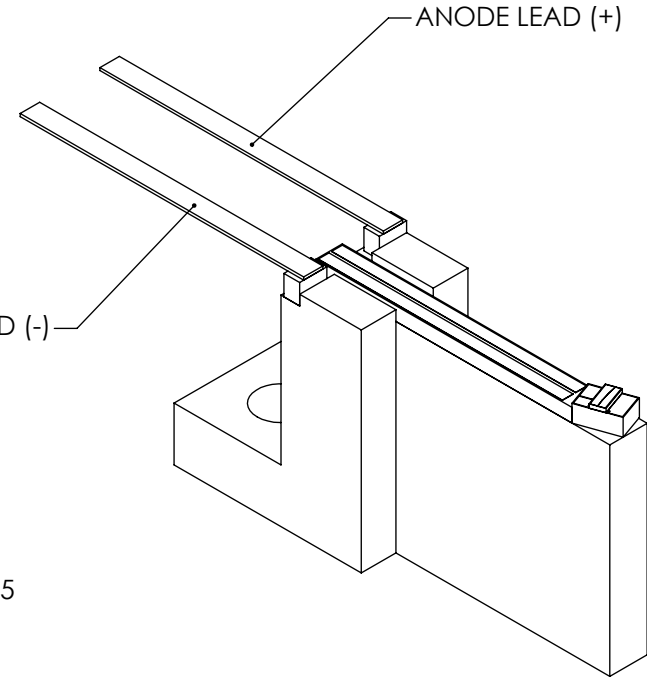
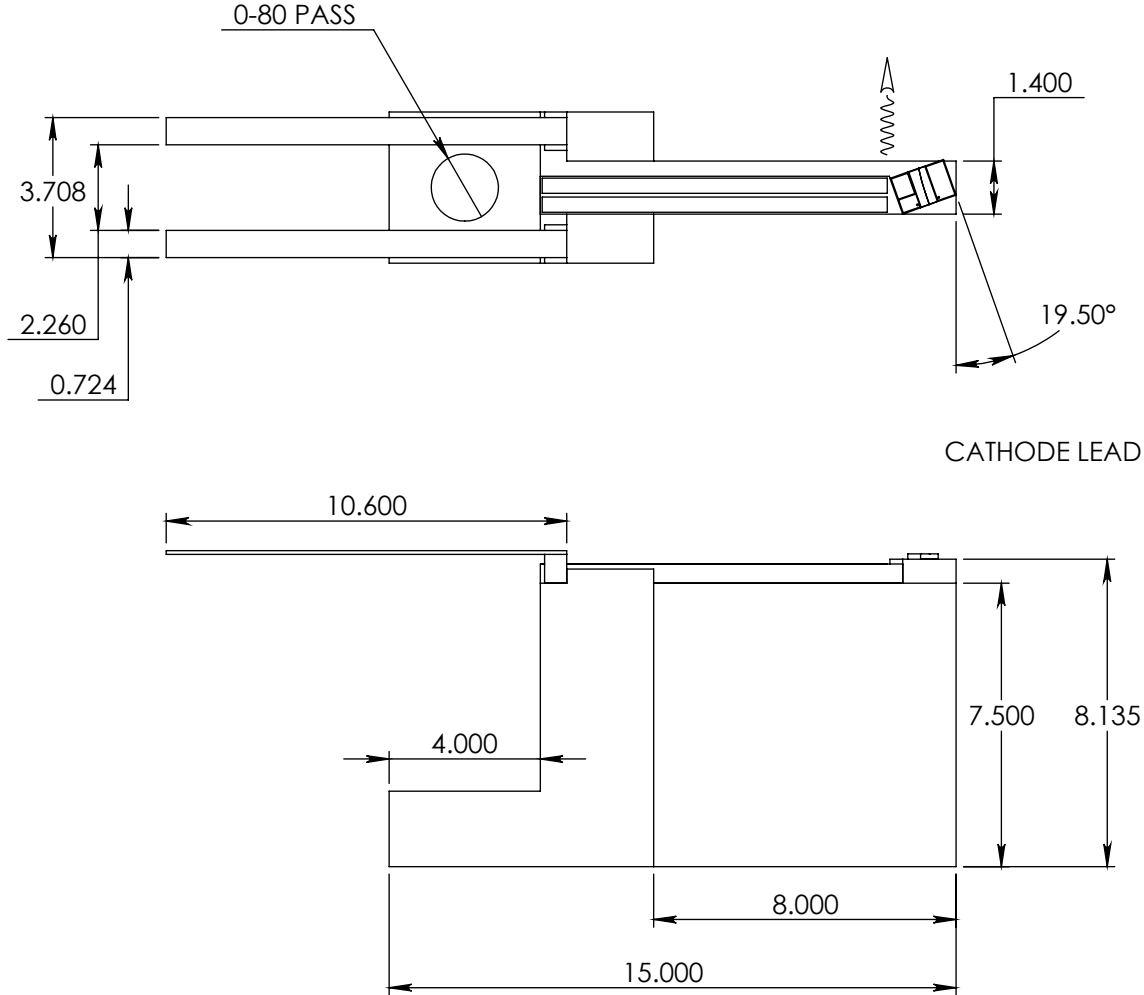


THE INFORMATION CONTAINED IN THIS DRAWING IS SENSITIVE AND PROPRIETARY AND IS THE SOLE PROPERTY OF COVEGA CORPORATION. ANY REPRODUCTION IN PART OR IN WHOLE WITHOUT THE WRITTEN PERMISSION OF COVEGA CORPORATION IS PROHIBITED.



UNLESS OTHERWISE SPECIFIED:
 DIMENSIONS ARE IN MM.
 TOLERANCES ARE:
 DECIMALS ANGLES
 .XXX ± 0.025 ± 1
 .XX ± 0.075
 .X ± 0.125
 REMOVE ALL BURRS AND BREAK SHARP EDGES 0.1 MAX.

MATERIAL
 FINISH

| | |
|------------------------|------|
| THIRD ANGLE PROJECTION | |
| APPROVALS | DATE |
| DRAWN | |
| CHECKED | |
| ENGINEER | |
| APPROV | CCB |
| DO NOT SCALE DRAWING | |

COVEGA CORPORATION
 10335 GUILFORD ROAD, JESSUP MD 20794

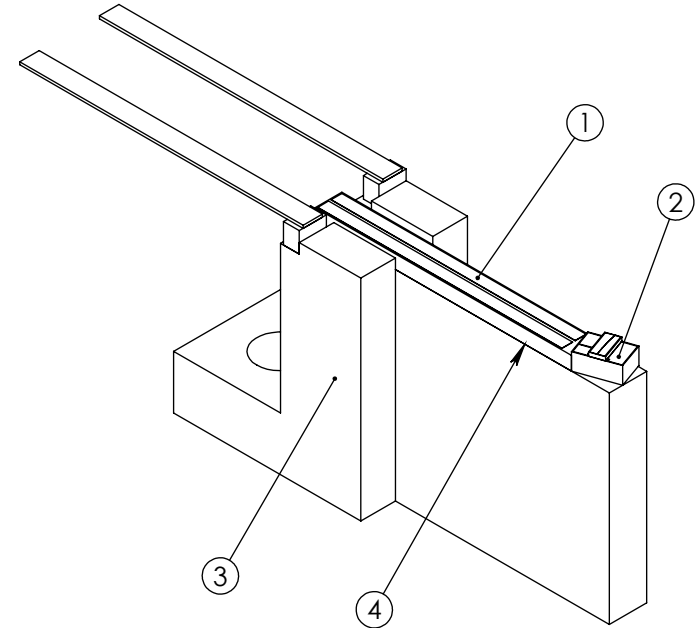
SAF1126H Heatsink Assembly

| | | |
|---------------|--|---------------|
| SIZE A | Doc log. NO. 20254 | REV. A |
| SCALE 5:1 | CADFILE: <small>Partfile: C:\Program Files\CAD\SAF Catalog Products\SAF 126H.dwg on Heatsink</small> | SHEET 1 OF 2 |

THE INFORMATION CONTAINED IN THIS DRAWING IS SENSITIVE AND PROPRIETARY AND IS THE SOLE PROPERTY OF COVEGA CORPORATION. ANY REPRODUCTION IN PART OR IN WHOLE WITHOUT THE WRITTEN PERMISSION OF COVEGA CORPORATION IS PROHIBITED.

| CO# | REVISION DESCRIPTION | APPROVED | DATE |
|-----|-----------------------|----------|------|
| 1 | 01932 Initial Release | | |

| ITEM NO. | QTY. | PART NO. | Rev. | DESCRIPTION |
|----------|------|-----------|------|--|
| 1 | 1 | 32083-000 | 1 | SAF - Ceramic Conductor Trace - Angled End Left (19.5°, 1.0mm) |
| 2 | 1 | 22068-xxx | C | 1.0mm SAF Submount Assy RR |
| 3 | 1 | 32239-000 | 1 | 1.40mm Heatsink w/Tabs |
| 4 | 1 | 32085-000 | 1 | 1 mil Solder Preform 60Pb-40In (.040 X .400) |



Notes:

1. Interpret drawing per ASME Y14.5M-1994.
2. See COVEGA Specification 7.4.2.PS.0014 for general requirements and sampling of circled dimensions.

| | | | |
|--|----------------------------|----------|---|
| UNLESS OTHERWISE SPECIFIED: DIMENSIONS ARE IN MM. TOLERANCES ARE: DECIMALS ANGLES .XXX ± 0.025 ± 1 .XX ± 0.075 .X ± 0.125 REMOVE ALL BURRS AND BREAK SHARP EDGES 0.1 MAX. MATERIAL FINISH | THIRD ANGLE PROJECTION | | COVEGA CORPORATION 10335 GUILFORD ROAD, JESSUP MD 20794 19.5° 1.0mm SAF Heatsink Assembly RR (PA-00059) |
| | APPROVALS | DATE | |
| | DRAWN HD | 11/17/06 | |
| | CHECKED GI | 11/17/06 | |
| ENGINEER AD | 11/17/06 | | |
| APPROV CCB | | | |
| DO NOT SCALE DRAWING | | | SIZE A DWG. NO. 22239-xxx REV. 1 SCALE 5:1 CADFILE: <small>PA-00059.dwg</small> SHEET 2 OF 2 |